



# PRODUCT CATALOG

BUILDING TRUST



# CONTENT

## WATERPROOFING

Lanko K10 Dampflex	5
Lanko K11 Matryx	5
SikaTop®-105 Seal QA	5
SikaTop®-107 Seal QA	5
SikaLastic®-152 QA	6
Sika MonoTop®-108 Water Plug QA	6
Sikadur®-52 (AB) CN	6
Sika Injection®-101 RC	6
Sika Injection®-201 CE	7
Sika Injection®-107 KA10	7
Sika Injection®-306 Set	7
Sika Injection®-310	7
Sika Igolflex®-100 QA	8
Sika Igolflex®-160 QA	8
Sika Igolflex®-165 QA	8
Sika Igolflex®-550 QA	8
SikaBit® P-13 QA	9
SikaBit® S-515	9
SikaBit® E-15-15 HDPE XL SA	9
Sika Waterbar® V-25	9
Sika Waterbar® AR-25	9
Sika Waterbar® A-32	10
Sika Waterbar® AR-20	10
Sika Waterbar® AR-31	10
Sika Waterbar® DR-32	10
Sika Waterbar® O-25	10
Sika Waterbar® O-32	11
SikaSwell® S-2	11
SikaSwell® A-2010 Rot	11
Sika Dilatec® BE-300	11
Sika Dilatec® BR-500	11
Sika Dilatec® E-220	12
SikaDilatec® ER-350	12
Sikadur-Combiflex® SG-20 P200	12
Sikadur-Combiflex® SG-20 P250	12
Sikadur-Combiflex® SG-20 P300	13
Sikadur-Combiflex® SG-20 P400	13
SikaFuko® Eco-1	13
SikaFuko® VT1 Combipack	13
Sikalastic® Metal Primer	14
Sikalastic®-8850	14
Sikalastic®-851 (A,B)	14
Sikalastic®-8800 (A,B)	14
Sikaplan® WP 1100-30 HL/22 HL/20 HL/15 HL	15
Sikaplan® WP 1100-20 HLE	15
Sikaproof® A-08 HC	16
Sikaproof® A-12 HC	16
Sikaproof® A+ 12	17
SikaProof® Tape A +	17
Sikaproof® Tape-150 A	17

## ROOFING

SikaRoof® MTC-12	19
SikaRoof® MTC-15	19
SikaRoof® MTC-18	19
SikaRoof® MTC-22	19
Sikalastic® 590	20
Sikalastic®-612	20

## ROOFING

Sikalastic®-614	20
Sikalastic®-618	20
Sikalastic®-625	21
Sikalastic®-641	21
Sikalastic®-701	21
Sikalastic®-708 UV	21
Sikalastic®-709	22
Sikalastic®-835i	22
Sikalastic®-833 R - ALU	22
Sikalastic®-851 R	23
Sikalastic®-852 R	23
Sikalastic®-708 UV	23
Sikalastic®-859 R	23
Sikalastic®-560	24
Sikalastic®-505	24
Sarnafil® TG 66	24
Sarnafil® TS 77	24
Sarnafil® S 327	25
Sarnafil® TG 76 Felt	25
Sarnafil® G 410 L Felt	25
Sarnafil® G 410 L	25
Sarnafil® G 410-18 EL Felt	26
Sikaplan® TB	26
Sikaplan® TM	26
Sika® Reemat Premium	26
Sika® Joint Tape SA	26

## BUILDING FINISHES

Sikaceram®-117 QA	28
Sikaceram®-118 QA	28
Sikaceram®-550 Silent	28
Lanko TileBond	28
Lanko TTB	28
Lanko TTB+	29
Lanko Sac 28	29
Lanko Sac 28+	29
Lanko Floorbond	29
Lanko Colorgrout	29
Lanko Colorgrout+	30
Lanko-572	30
Lanko EA	30
Lanko EG	30
Lanko PRC 1	30
Lanko PRC 2	31
Lanko PP-1	31
Lanko TB-F	31
Lanko TB-F+	31
Lanko Granatech	31
Lanko FBC	32
Lanko Monodecor GT	32
Lanko Ceramic Coating	32
Lanko PCK	32
Lanko Magic Grantie	33
Lanko Stony Coating	33
Parexal	33

## REFURBISHMENT

Sika AnchorFix® - 1 N	35
SikaTop® Armatec®-110	35
EpoCem®	
Sika AnchorFix®-2+ Tropical	35
Sika Anchorfix®-3001	36
Sikadur®-32 Normal	36
SikaLatex®-100 P QA	36
Sikagrout®-214 QA	37
Lanko NSG	37
Sikagrout®-114 QA	37
Sikadur®-42 MP Slow QA	37
Sika Monotop®-612 QA	38
Sika Monotop®-625 Fine QA	38
Lanko Skimcoat 113	38
Lanko 731	38
Lanko Skim 110	38
Sikacrete®-113 PP QA	39
Sikacrete®-114 QA	39
Sikadur®-31 CF Slow/Normal	39
Sikagard®-700 S QA	40
Sikagard®-705 L	40
Sikagard®-720 Epocem	40
Sika Intraplast® CFG	41
Sika Anchorfix® -3030	41
Lanko 101	41
Lanko CG 60	41
Sika® FerroGard®-903	42
Sika® Galvashield® XP	42
Sika® Galvashield® XPT	42
Sika® Galvashield® XP2	42
Sika® Galvashield® XP4	42
Sika® Galvashield® Embedding Mortar	43
Sika® Galvashield® CC	43
Sika® Galvashield® T2	43
Sika® Galvanode® DAS	44
Sikagard®-790	44
Lanko 238 Hydroresist	44

## SEALING & BONDING

Sikasil® SG-18	46
SikaHyflex® 305 EU	46
Sikaflex® Construction+	46
Sikaflex®-11 FC+	46
Sikaflex® Pro-3	46
Sikaflex® PRO-3 SL	47
Sikaflex®-118 Extreme Grab	47
Sikaflex®-111 Stick & Seal	47
Sikaflex®-112 Crystal Clear	47
SikaBond®-115 Strong Fix	48
Sikasil® Universal	48
Sika Sanisil®	48
Sika® Aktivator®-205	48
SikaPrimer®-3 N	49
SikaPrimer®-210	49
Sikasil® WS-305 S	49
Sikacryl®-621 Fire	49
Sikacryl®-110	49
Sikaflex®-428 Precast	49

## CONCRETE

Sika® Separol®-300 QA	51
Sika® Separol® FP-15	51
Sika® Antisol®-200 QA	51
Sika® Antisol® -250 WP	51
Lanko K11 CWA	52
SikaIntraplast® -Z	52
SikaFibre® 12-34	52
SikaFibre® Force PP-65	52

## FLOORING

Sikafloor®-161 QA	54
Sikafloor®-161	54
Sikafloor® -264 SG	54
Sikafloor® -359 N	54
Sikafloor® -3240	54
Sikagard®-62	55
Sikadur® Aggregates QA	55
Sikafloor®-20 PurCem®	55
Sikafloor®-21 N PurCem® (CN)	55
Lanko Floor Screed	56
Lanko 123	56
Lanko 162	56
Lanko 173	56
Lanko 243	56
Sikagard® WallCoat N QA	57
SikaDecor®-801 Nature	57
SikaDecor®-803 Nature	57
Sikafloor®-304 W	57
Sikafloor®-330	57
Sikafloor®-305 W ESD	58
Sikafloor®-305 W	58
Sika® DecoQuartz	58
Sikafloor®-169	58
Sikafloor® Comort Regupol-4580	59
Sikafloor® Comfort Porefiller	59
Sikafloor® Comfort Adhesive	59
Sikafloor® Comfort Regupol-6015 H	59
Sikafloor® Conductive Set	59
Sikafloor® MultiDur ES-44 ESD	59
Sikafloor® PS	60
Sika® PU Quartz	60
Sikafloor® DecoDur EM-21 Compact	60
Sikafloor®-2530 W LP	60
SikaTop®-10	60
Sikafloor®-154 W	61
Sikafloor®-2100	61
Sikadur®-504	61
Sikafloor® CureHard-24	61
Sikafloor®-1 MetalTop	62
Sika® Extender T	62
Sikafloor®-2040	62
Sikafloor®-381	62
SikaCor® EG-5	62
SikaCor® Zinc R	63
SikaCor® EG-120	63
Sika® Permacor®-2230 VHS	63



# WATERPROOFING SOLUTIONS



## Lanko K10 Dampflex



### USE

- Provides a seamless waterproofing system which is ideal for use in shower recess prior to tiling.
- Can also be used to waterproof terraces and balconies.
- Bond to various substrates, e.g. concrete, render, existing tile, gypsum, metal/wooden surfaces, fiber ce-ment/particle boards.

### CHARACTERISTICS

- Ready-to-use, ease of application
- Fast dry
- Extremely flexible, high elongation, absorb vibration
- Water based, non-toxic, non-flammable
- Bonds to various substrates

**PACKAGING:**  
20 kg container

## Lanko K11 Matryx



### USE

Recommended for interior and exterior below grade surfaces. LANKO K11 Matryx gives protection against concrete decay and water-borne corrosive salts.

Can be used for negative waterproofing of concrete structure and on horizontal structural slabs against hydrostatic pressure as it provides strong resistance to impact and abrasion.

### CHARACTERISTICS

- Single component and easy to apply.
- Can be used for positive or negative waterproofing of concrete structure.
- Protection against rising dampness on ground slab.

**PACKAGING:**  
25 kg bag

## SikaTop® -105 Seal QA



### USE

SikaTop®-105 Seal QA is used for:-

- Interior and exterior waterproofing and damp-proofing of concrete, cementitious rendering, brickwork and blockwork
- Protection of concrete structures against the effects of de-icing salts and freeze thaw attack
- Rigid waterproofing of basement walls in new construction and refurbishment
- Pore / blowhole filling
- Waterproofing basement and cellars
- Sealing fine "hairline" cracks in concrete structures (not subject to movement)
- Levelling mortar for concrete repair works.

SikaTop®-105 Seal QA can be used for concrete protection. In particular it is:

- Suitable for protection against ingress (Principle 1, method 1.3 of EN 1504-9)
- Suitable for moisture control (Principle 2, method 2.2 of EN 1504-9)
- Suitable for increasing the resistivity (Principle 8, method 8.2 of EN 1504-9)

### CHARACTERISTICS

- Easy to apply by brush or in thin trowel applications
- No water required
- Pre-batched components
- Hand or spray applied
- Easy and fast mixing
- Very good adhesion
- Protects concrete against carbonation
- Protects against water penetration
- Non-corrosive to steel or iron
- Over-paintable
- Approved for potable water contact

**PACKAGING:**  
25 kg set (5 kg pail Part A + 20 kg bag Part B)

## SikaTop® -107 Seal QA



### USE

- Rigid waterproofing of basement walls in new construction and refurbishment
- Concrete surface protection, to improve the durability
- Waterproofing and protection of hydraulic structures such as: basins, tanks, concret piping, bridges, canals
- Protective coating for reinforced concrete structures
- Waterproofing of terraces, balconies and wet areas underneath protection screed and tiles

### CHARACTERISTICS

- Easy to apply by brush or in thin trowel applications
- No water required
- Pre-batched components
- Hand or spray applied
- Easy and fast mixing
- Very good adhesion
- Protects concrete against carbonation
- Protects against water penetration

**PACKAGING:**  
25 kg set (5 kg pail Part A + 20 kg bag Part B)



## SikaLastic®-152 QA



### USE

- Flexible waterproofing and protection of hydraulic structures such as basins, tanks, concrete piping, bridges and canals
- Waterproofing of bathrooms, shower, terraces, balconies, swimming pools before the application of ceramic tiles bonded with adhesives
- Waterproofing and protection of outer walls to be buried into the ground
- Inside waterproofing of light counter pressure water of walls and floors in basements
- Protective, anti-carbonation coating of concrete surfaces

### CHARACTERISTICS

- Flexible waterproofing and concrete protection in one product
- Very good crack-bridging abilities, also at low temperature
- Resistance against de-icing salts and carbon dioxide
- Reliable application also in very humid environment
- All components ready delivered, no additional mixing water required
- Applicable also on lightly humid subgrades
- Excellent adhesion onto lots of substrates such as concrete, cement mortars, stone, masonry

### PACKAGING:

Ready batched 33 kg units:  
Comp. A 8 kg  
Comp. B 25 kg  
Grey

## Sika MonoTop®-108 Water Plug QA



### USE

- Ready-to-mix powder.
- Fast-setting.
- Can be used underwater.
- Non-toxic.
- High resistance to pressure.
- Suitable for contact with potable water.

### CHARACTERISTICS

- Water tanks, reservoirs, gutters.
- Toilet, swimming pools.
- Underground structures.
- Floor-wall joints.
- Sealing of injectors and drain

### PACKAGING:

15 kg container.

## Sikadur®-52 (AB) CN



### USE

As an injection resin with good adhesion to concrete, mortar, stone, steel and wood. Sikadur®-52 CN is used to fill and seal voids and cracks in structures such as bridges and other civil engineering buildings, industrial and residential buildings, e.g. columns, beams, foundations, walls, floors and water retaining structures. It not only forms an effective barrier against water infiltration and corrosion promoting media, but it also structurally bonds the concrete sections together.

### CHARACTERISTICS

- Solvent-free
- Sharkage free hardening
- High mechanical and adhesive strengths
- Hard but not brittle
- Low viscosity
- In injectable with single component pumps

### PACKAGING:

15 kg container.

### COLOR:

Component A: Transparent  
Component B: Brownish  
Components A + B mixed: Yellowish-brownish

## Sika Injection®-101 RC



### USE

- Sika® Injection-101 RC may only be used by experienced professionals.
- Sika® Injection-101 RC is used for the temporary water stopping of high-water intrusions in cracks, joints and cavities in concrete, brickwork and natural stone-work.
- To achieve permanent watertight crack sealing, Sika® Injection-201 CE should be injected subsequently

### CHARACTERISTICS

- No reaction takes place unless it is in direct contact with water.
- Sika® Injection-101 RC can be injected as a single component system.
- The free foaming expansion in contact with water is up to 40 times.
- The reaction speed (foam formation) is influenced by the temperatures of the mixed material, the structure and the contact water, plus the hydrodynamic conditions.

### PACKAGING:

Part A 10 or 20 kg  
Part B 12.5 or 25 kg

## Sika Injection®-201 CE



### USE

- Sika® Injection-201 CE may only be used by experienced professionals.
- Sika® Injection-201 CE is used for permanent watertight sealing with some flexibility to absorb limited movement, in dry, damp or water-bearing cracks and joints in concrete, brickwork and natural stone
- Sika® Injection-201 CE can be used for the injection of the SikaFuko®-System (non re-injectable!)
- For use in water-bearing cracks under hydrostatic pressure, preliminary injection shall be made with Sika® Injection-101 RC.

### CHARACTERISTICS

- Permanently elastic, can absorb limited movements
- No shrinkage in subsequent dry conditions
- Due to its low viscosity it can penetrate into cracks >0.2 mm in width
- Cured Sika® Injection-201 CE is inert and chemically resistant
- Solvent-free
- Can be injected as a one component system

#### PACKAGING:

Part A 10 kg, 20 kg  
Colourless  
Part B 10.6 kg, 21.2 kg  
Brown

## Sika Injection® -107 KA10



### USE

- Sika® Injection-107 may only be used by experienced professionals.
- Sika® Injection-107 is used for permanent watertight sealing with some flexibility to absorb limited movement, in water-bearing cracks and joints in concrete, brickwork and natural stone structures.

### CHARACTERISTICS

- Permanently elastic, can absorb limited movements.
- Durable sealing of water-bearing cracks and voids of > 0.3mm.
- Moisture-reactive, one-component polyurethane resin – water contact is required for the foaming reaction and curing to a permanently flexible sealing compound.

#### PACKAGING:

Available in metal containers of:  
5.3 kg  
10.6 kg

## Sika Injection®-306 Set



### USE

- Sika® Injection-306 may only be used by experienced professionals.
- Sika® Injection-306 is used for the repair by injection of damaged waterproofing membranes (single and double layer system).
- Sika® Injection-306 is used as a post-construction, external injection sealing system for construction and limited movement expansion or drainage pipe joints, that are, or will be, covered with damp or water saturated soil.
- Sika® Injection-306 is used for the injection of SikaFuko® injection hoses to seal construction joints.
- Sika® Injection-306 can be used to seal water-bearing cracks and voids.
- Sika® Injection-306 can be used for making new sealing walls (curtains) in damp or water saturated ground conditions, situated in close proximity to the building component or within the building structure.

### CHARACTERISTICS

- Adjustable curing time between 8 and 50 minutes
- Permanently elastic, can absorb limited movements
- Capable of reversibly absorbing (swelling) and releasing (shrinking) moisture
- Solvent free acrylic resin
- High pH-value of 9 to 10
- Very low viscosity comparable to that of water
- Cured Sika® Injection-306 is insoluble in water and hydrocarbons and resistant to acids and alkalis
- Can be used in ground water protection zones

#### PACKAGING:

Component A (Resin) 2 x 8.0 kg  
Accelerator 1 x 1.0 kg  
Hardener powder 4 x 40 g  
Measuring cup 1 piece  
Additional Accelerator 4 x 1 kg used for faster reaction times

## Sika Injection® -310



### USE

Sika® Injection-310 may only be used by experienced professionals.

Repair by injection of damaged waterproofing membranes (single and double layer system)

Sealing of construction joints via injection hoses, i.e. SikaFuko® System

Injection of construction and movement expansion joints

### CHARACTERISTICS

- 1-part, all in one product
- Activation by just adding water
- Easy to mix compared to multicomponent resins
- Easy to apply with 1-component pump
- Very low viscosity
- Equipment easy to clean, only water required
- When cured, insoluble in water and hydrocarbons

#### PACKAGING:

**Pail**  
4 x 5 kg sealed bags in 30 litre container  
18 containers on pallet (360 kg)

**Box**  
5 x 5 kg in box  
24 boxes on pallet (600 kg)

## Sika Igolflex®-100 QA



### USE

- Concrete foundation which are above the water table
- Block works
- Building facades prior to cladding

### CHARACTERISTICS

- VOC free
- No health or environmental hazard
- Odorless and safe to apply in poorly ventilated or confined areas
- Easy to apply. Cold applied. No additional heating is required
- Good resistance to soil chemicals like chlorides and sulfates
- Good adhesion on most substrates
- Non flammable

**PACKAGING:**  
200 kg drums

## Sika Igolflex®-160 QA



### USE

- Tanking and waterproofing of substructures to provide an impervious membrane
- Vapour barrier of cladded walls
- Maintenance of many roof types including asphalt-felt roofs, concrete, cement, light-weight screeds, timber etc.
- As an adhesive for bonding insulation boards, expanded polystyrene, cork tiles etc.
- Damp proof membrane for roofs and floor slabs
- Efficient curing membrane to freshly laid concrete
- Basements, retaining walls

### CHARACTERISTICS

- High rubber content - 10 %
- Excellent adhesion to most building substrates
- Reduced chloride penetration
- Can be applied on damp substrates
- Non sagging
- Single component
- Water based
- Economical, easy to apply, reduces labour cost
- Can be applied on vertical and horizontal areas
- Impermeable to water
- Elastic, seamless, joint free
- Unaffected by high ambient temperature
- Resistant to aggressive soils and contaminated ground water
- Low odour, dries without generating strong vapour

**PACKAGING:**  
180 kg drums

## Sika Igolflex®-165 QA



### USE

- Bathrooms, showers, kitchens and other wet areas
- For water tanks, general waterproofing, vapor barrier and damp proofing of concrete structures, roofs, walls, decks and floors
- Water proofing of concrete substructures and block works
- Water proofing basements and retaining walls
- Damp proofing and vapor barrier for building facades prior to cladding
- Maintenance of concrete, cement, metal or wooden roofs
- Maintenance of existing built up roof waterproofing
- Adhesive for polystyrene insulation boards, wood mosaic or tiles

### CHARACTERISTICS

- Durable, elastic and joint free coating
- VOC free and non-flammable
- No health or environmental hazard
- Odorless, safe to apply in poorly ventilated or confined areas
- Easy to apply. Cold applied. No additional heating is required
- Highly thixotropic and high viscosity
- Can be applied at high thickness on vertical surface without any sag or flow
- Good resistant to soil chemicals like chlorides and sulfates
- Good adhesion on most substrates

**PACKAGING:**  
200 kg drums

## Sika Igolflex®-550 QA



### USE

- Water proofing of concrete substructures and block works
- Water proofing basements and retaining walls
- Damp proofing and vapor barrier for building facades prior to cladding
- Maintenance of concrete, cement, metal or wooden roofs
- For water tanks, general waterproofing, vapor barrier and damp proofing of concrete structures like basements, roofs, walls, decks and floors
- Maintenance of existing built up roof waterproofing
- Adhesive for polystyrene insulation boards, wood mosaic or tiles

### CHARACTERISTICS

- VOC free
- No health or environmental hazard
- Odorless and safe to apply in poorly ventilated or confined areas
- Easy to apply. Cold applied. No additional heating is required
- Highly thixotropic/in paste form
- Can be applied at high thickness on vertical surface without any sag or flow
- Good resistance to soil chemicals like chlorides and sulfates
- Good adhesion on most substrates
- Non-flammable

**PACKAGING:**  
200 kg drums



## SikaBit® P-13 QA



### USE

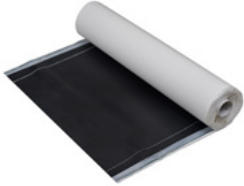
- SikaBit® P-13 QA is used as a primer for SikaBit® membranes to increase adhesion and bond to the substrate.

### CHARACTERISTICS

- High adhesion and bonding ability on various substrates
- Good binding ability for dust and loose particles
- Ready to use by brush, roller or spray

**PACKAGING:**  
200 L drums

## SikaBit® S-515



### USE

SikaBit® S-515 is a cold and post-applied self-adhesive sheet waterproofing membrane. The system is applied on existing below ground concrete structures to provide damp-proofing and waterproofing:

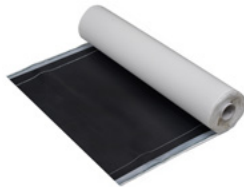
- On horizontal slabs and protrusions
- On single and strip foundations or slabs
- On the outside of external walls
- On concrete roof decks

### CHARACTERISTICS

- Cold-applied and self-adhesive (no heating or open flames required)
- Fully bonded sheets with self-sealing abilities
- Resistant to aggressive mediums in natural ground water and soil
- Provides Radon and Methane gas barrier
- Controlled layer thickness
- Easy, fast and secure application, without special equipment
- Temporarily UV-/weather resistant (during limited construction periods)

**PACKAGING:**  
1.00 x 20 m single roll  
packed in a cardboard  
box, 33 kg/roll

## SikaBit® E-15-15 HDPE XL SA



### USE

SikaBit® E 15-15 HDPE XL SA is a cold and post-applied self-adhesive sheet waterproofing membrane. The system is applied on existing below ground concrete structures to provide damp-proofing and waterproofing:

- On horizontal slabs and protrusions
- On single and strip foundations or slabs
- On the outside of external walls

### CHARACTERISTICS

- Cold-applied and self-adhesive (no heating or open flames required)
- Fully bonded sheets
- Resistant to aggressive mediums in natural ground water and soil
- Controlled layer thickness
- Easy, fast and secure application, without special equipment
- Split release liner for easy application

**PACKAGING:**  
1.05 m x 15 m single roll

## Sika Waterbar® V-25



### USE

For the effective sealing of concrete construction and expansion joints in structures such as:

- Basements
- Water reservoirs
- Sewage treatment plants
- Swimming pools
- Retaining walls
- Lift shafts
- Tunnels, culverts
- Service pits

### CHARACTERISTICS

- Sealing starts as soon as the concrete has hardened
- Multi rib profile provides impenetrable barriers to water migration
- Can be easily site welded - (welding knife is available)
- Good chemical resistance
- Available various kind of profiles for all type of application

**PACKAGING:**  
20 m rolls

## Sika Waterbar® AR-25



### USE

For the effective sealing of concrete construction and expansion joints in structures such as:

- Basements
- Water reservoirs
- Sewage treatment plants
- Swimming pools
- Retaining walls
- Lift shafts
- Tunnels, culverts
- Service pits

### CHARACTERISTICS

- Sealing starts as soon as the concrete has hardened
- Multi rib profile provides impenetrable barriers to water migration
- Can be easily site welded - (welding knife is available)
- Good chemical resistance
- Available various kind of profiles for all type of application

**PACKAGING:**  
20 m rolls

## Sika Waterbar® A-32



### USE

- Watertight joint sealing of construction joints in new concrete structures. Typical structures include:
- Residential building basements
- Commercial building basements
- Underground car parks
- Water retaining structures and water treatment plants

### CHARACTERISTICS

- High tensile strength and elongation
- Permanent flexibility
- Suitable for low to medium levels of hydrostatic water pressure
- Resistant to all-natural mediums in soil and groundwater
- Resistant to a broad spectrum of chemicals
- Robust products designed for handling and installation on site
- Suitable for thermal welding in shop and on site

### PACKAGING:

Standard rolls of 15 m length packed on Euro or disposable pallets. Factory produced, pre-fabricated Sika® Waterbar water-stopping systems are supplied in coils, on Euro or disposable pallets dependent on their size.

## Sika Waterbar® AR-20



### USE

Sika® Waterbars are used to waterproof construction and expansion joints in concrete structures such as those in water retaining structures including reservoirs, canals, sewage plants, dams, swimming pools etc. Plus those in the watertight construction of many buildings and structures including large basements, underground car parks, subways and sea walls etc.

### CHARACTERISTICS

- High quality PVC for long durability
- Suitable for high water pressure
- Easy to weld on site
- Many different sizes and types available, depending on their use

### PACKAGING:

10 m rolls  
15 m rolls  
30 m rolls  
(Depends on type and size)

## Sika Waterbar® AR-31



### USE

- Sika® Waterbars are used to waterproof construction and expansion joints in concrete structures such as those in water retaining structures including reservoirs, canals, sewage plants, dams, swimming pools etc. Plus those in the watertight construction of many buildings and structures including large basements, underground car parks, subways and sea walls etc.

### CHARACTERISTICS

- High quality PVC for long durability
- Suitable for high water pressure
- Easy to weld on site
- Many different sizes and types available, depending on their use
- 

### PACKAGING:

10 m rolls  
15 m rolls  
30 m rolls  
(Depends on type and size)

## Sika Waterbar® DR-32



### USE

Sika® Waterbars are used to waterproof construction and expansion joints in concrete structures such as those in water retaining structures including reservoirs, canals, sewage plants, dams, swimming pools etc. Plus those in the watertight construction of many buildings and structures including large basements, underground car parks, subways and sea walls etc.

### CHARACTERISTICS

- High quality PVC for long durability
- Suitable for high water pressure
- Easy to weld on site
- Many different sizes and types available, depending on their use

### PACKAGING:

10 m rolls  
15 m rolls  
30 m rolls  
(Depends on type and size)

## Sika Waterbar® O-25



### USE

Sika®-Waterbars\* are used to seal construction and expansion joints in water retaining structures such as reservoirs, water towers, dams, spillways, canals, swimming pools, sewage tanks etc. as well as to keep water out of concrete structures such as basements, underground car parks, tunnels, subways, retaining walls etc.

### CHARACTERISTICS

- High quality PVC for long durability
- Suitable for high water pressure
- Easy to weld on site
- Many different sizes and types available, depending on their use

### PACKAGING:

15 m rolls

## Sika Waterbar® O-32



### USE

Sika®-Waterbars are used to waterproof construction and expansion joints in concrete structures such as those in water retaining structures including reservoirs, canals, sewage plants, dams, swimming pools etc. Plus those in the watertight construction of many buildings and structures including large basements, underground car parks, subways and sea walls etc.

### CHARACTERISTICS

- High quality PVC for long durability
- Suitable for high water pressure
- Easy to weld on site
- Many different sizes and types available, depending on their use

### PACKAGING:

10 m rolls  
15 m rolls  
30 m rolls  
(Depends on type and size)

## SikaSwell® S-2



### USE

Sealing:

- Construction joints
- Pipe and steel work penetrations through walls and floor slabs
- Around all types of penetrations and construction joints
- Construction joints in cable ducts, etc.
- Fixing / Adhering swellable profiles:
- SikaFuko® Swell 1 Injection hoses
- SikaSwell®-A Profiles
- SikaSwell®-P Profiles

### CHARACTERISTICS

- Easy to apply
- Good adhesion to various substrates
- Optimized expansion rate, therefore no damage to fresh concrete during curing
- Highly economical
- Swells in contact with water
- Permanently water resistant
- Adaptable to fit many different types of detailing

### PACKAGING:

600 ml unipacs 20  
unipacs/box, 48 boxes/  
pallet  
300 ml cartridges 12  
cartridges/box, 112  
boxes/pallet

### COLOR:

Oxide Red

## SikaSwell® A-2010 Rot



### USE

To seal:

- Construction joints
- Pipe and steel work penetrations through walls and floor slabs
- Construction joints in cable ducts, etc.
- Around all types of penetrations through concrete

### CHARACTERISTICS

- Easy to apply
- Can be applied on different substrates
- Highly economical
- Swells in contact with water
- Can swell into cracks and gaps
- Long-term reliability tested
- Resistant against water and various chemical substances
- No hardening time required
- No welding required
- Adaptable to fit many different detailing tasks
- Different types and dimensions available

### PACKAGING:

Roll of 10 m  
Box with 1 or 6 rolls

## Sika Dilatec® BE-300



### USE

End tape for bituminous waterproofing on concrete and metals. Sealed on one side with hot bitumen between polymer bitumen waterproofing membranes (B-edge) and bonded on the other side with Sikadur®-Combiflex® CF Adhesive or Sikadur®-31 CF Slow (E-edge).

### CHARACTERISTICS

- Durable water and weather resistance
- High movement absorption
- Root resistant
- Resistant to many chemicals
- UV resistant
- Suitable for use and service over a wide temperature range
- Can be hot air welded

### PACKAGING:

Thickness 1.6 mm  
Width 300 mm  
Roll length 30 m

## Sika Dilatec® BR-500



### USE

End tape for bituminous waterproofing and joining tape between PVC waterproofing membranes and bituminous waterproofing. Sealed on one side with hot bitumen between two layers of polymer modified bitumen membrane (B-edge) and welded on the other side to the PVC waterproofing membrane (R-edge).

### CHARACTERISTICS

- Durable water and weather resistance
- High movement absorption
- Root resistant
- Resistant to many chemicals
- UV resistant
- Suitable for use and service over a wide temperature range
- Can be hot air welded

### PACKAGING:

Thickness 1.6 mm  
Width 500 mm  
Roll length 30 m



## Sika Dilatec® E-220



### USE

Sealing tape for construction and movement joints in concrete and metals.

Bonded on both sides with Sikadur®-Combiflex® CF Adhesive or Sikadur®-31 CF Slow (E-edges).

### CHARACTERISTICS

- Durable water and weather resistance
- High movement absorption
- Root resistant
- Resistant to many chemicals
- UV resistant
- Suitable for use and service over a wide temperature range
- Can be hot air welded

### PACKAGING:

Thickness 1.6 mm  
Width 220 mm  
Roll length 30 m

## SikaDilatec® ER-350



### USE

End tape for PVC waterproofing membranes on concrete and metals.

Bonded on one side with Sikadur®-Combiflex® CF Adhesive or Sikadur®-31 CF Slow (E-edge) and welded on the other side to the PVC waterproofing membrane (R-edge).

### CHARACTERISTICS

- Durable water and weather resistance
- High movement absorption
- Root resistant
- Resistant to many chemicals
- UV resistant
- Suitable for use and service over a wide temperature range
- Can be hot air welded

### PACKAGING:

10 m rolls  
15 m rolls  
30 m rolls  
(Depends on type and size)

## Sikadur-Combiflex® SG-20 P200



### CHARACTERISTICS

Sealing all types of joints and cracks in many different structures and applications including:

- Tunnels and culverts
- Hydroelectric power plants
- Sewage treatment plants
- Basements
- Water retaining structures
- Drinking water reservoirs

Sealing of:

- Movement joints
- Construction joints
- Pipe penetrations
- Cracks

Building components where differential settlement is expected

### CHARACTERISTICS

- Advanced adhesion, no activation on site required
- Highly flexible - high crack and joint bridging ability
- Good chemical resistance
- Weathering and UV-resistant
- Root penetration resistant
- Performs well within a wide range of temperatures
- Plasticiser-free
- Hot air weldable
- Can be used in contact with potable/drinking water

### PACKAGING:

15 m rolls

## Sikadur-Combiflex® SG-20 P250



### CHARACTERISTICS

Sealing all types of joints and cracks in many different structures and applications including:

- Tunnels and culverts
- Hydroelectric power plants
- Sewage treatment plants
- Basements
- Water retaining structures
- Drinking water reservoirs

Sealing of:

- Movement joints
- Construction joints
- Pipe penetrations
- Cracks

Building components where differential settlement is expected

### CHARACTERISTICS

- Advanced adhesion, no activation on site required
- Highly flexible - high crack and joint bridging ability
- Good chemical resistance
- Weathering and UV-resistant
- Root penetration resistant
- Performs well within a wide range of temperatures
- Plasticiser-free
- Hot air weldable
- Can be used in contact with potable/drinking water

### PACKAGING:

1 roll of 25 m length

## Sikadur-Combiflex® SG-20 P300



### CHARACTERISTICS

Sealing all types of joints and cracks in many different structures and applications including:

- Tunnels and culverts
- Hydroelectric power plants
- Sewage treatment plants
- Basements
- Water retaining structures
- Drinking water reservoirs

Sealing of:

- Movement joints
- Construction joints
- Pipe penetrations
- Cracks

Building components where differential settlement is expected

### CHARACTERISTICS

- Advanced adhesion, no activation on site required
- Highly flexible - high crack and joint bridging ability
- Good chemical resistance
- Weathering and UV-resistant
- Root penetration resistant
- Performs well within a wide range of temperatures
- Plasticiser-free
- Hot air weldable
- Can be used in contact with potable/drinking water

### PACKAGING:

600 ml unipacs 20  
unipacs/box, 48 boxes/  
pallet  
300 ml cartridges 12  
cartridges/box, 112  
boxes/pallet

### COLOR:

Oxide Red

## Sikadur-Combiflex® SG-20 P400



### CHARACTERISTICS

Sealing all types of joints and cracks in many different structures and applications including:

- Tunnels and culverts
- Hydroelectric power plants
- Sewage treatment plants
- Basements
- Water retaining structures
- Drinking water reservoirs

Sealing of:

- Movement joints
- Construction joints
- Pipe penetrations
- Cracks

Building components where differential settlement is expected

### CHARACTERISTICS

- Advanced adhesion, no activation on site required
- Highly flexible - high crack and joint bridging ability
- Good chemical resistance
- Weathering and UV-resistant
- Root penetration resistant
- Performs well within a wide range of temperatures
- Plasticiser-free
- Hot air weldable
- Can be used in contact with potable/drinking water

### PACKAGING:

1 roll of 25 m length

## SikaFuko® Eco-1



### USE

SikaFuko® Eco 1 is used to seal construction joints in watertight structures against water and salt water ingress. It is cast into the construction joints of the concrete.

When it is necessary to seal or reseal the construction joints, SikaFuko® Eco 1 can be injected with the most suitable Sika Injection materials based on acrylic and polyurethane resins or micro-fine cement suspensions.

### CHARACTERISTICS

- Re-injectable with Sika acrylic resins and micro-fine cement suspensions.
- One time injectable with Sika polyurethane injection resins.
- Highly economical
- Ideal back-up solution for combination with waterstops
- Easy to install
- Tested in water pressures up to 10 bar (100m)
- Suitable for many different structures and construction methods

### PACKAGING:

as a Combi-pack in a cardboard box containing:  
- 200 m SikaFuko® Eco 1  
- 10 m green PVC-hose (inlet)  
- 10 m white PVC-hose (outlet)  
- Accessories (2 m connecting pipe, 4 m heat shrink sleeve, x 50 closure plugs, 1 can of glue, 1 roll of tape, x 800 fastening clips)

## SikaFuko® VT1 Combipack



### USE

- Sealing construction and connection joints
- Suitable for many different structures and construction methods where additional joint security/safety is required
- Prevents water ingress through concrete joints in the following typical structures: Water retaining or excluding structures, water reservoirs, dams, canals, sewage treatment plants, tunnels, subways, retaining walls
- As a back-up system for waterbars
- Enables testing for water leaks

### CHARACTERISTICS

- Uses unique 'valve techniques' for injection
- Multiple re-injections with Sika injection acrylate resins or microfine cement suspensions
- One-time injectable with Sika injection polyurethane and epoxy resins
- Easy and secure installation
- Tested in water pressures up to 10 bar (100 m)
- External test reports for suitable injection material
- Ideal back-up system in combination with waterbars
- Long-term references on many international projects

### PACKAGING:

Supplied as a Combi-pack in a cardboard box containing:  
200 m SikaFuko® VT-1  
10 m green PVC-hose (inlet)  
10 m white PVC-hose (outlet)

## Sikalastic® Metal Primer



### USE

Versatile and anti-corrosive primer on metal substrates for use with:

- SikaRoof® MTC
- Sikalastic® roofing systems
- Sikafloor® balcony waterproofing systems
- Sikagard® hygiene coatings

Barrier against migration of volatile bitumen or plasticizer migration

### CHARACTERISTICS

- Fast curing, overcoat possible after 6 hours
- Corrosion protection in industrial and marine environments
- Easy application by brush or roller
- Enhances adhesion to a broad range of metallic substrates
- Protects against migration of volatile bitumen or plasticizers

### PACKAGING:

5.0 L (~7.17 kg) containers  
Component A: 2.5 L (~3.7 kg)  
Component B: 2.5 L (~3.47 kg)

## Sikalastic®-8850



### USE

- Sikalastic®-8850 may only be used by experienced professionals.

#### Concrete:

- Abrasion resistant protective coating in industrial and manufacturing facilities
- Waterproofing for cut and cover structures, submersed structures, walkways and balconies, floors and car park decks
- Water retaining structures in power plants
- Secondary containment structures
- Tank, bund and pit lining in sewage and waste water treatment plants

#### Steel:

- Truck bed lining
- Wear resistant coating on hydraulic steel structures

### CHARACTERISTICS

- Seamless
- Very fast reactivity and curing time
- Almost immediate return-to-service time
- Performs in constant dry temperatures from -30 °C to +100 °C
- Good crack bridging properties
- Good chemical and abrasion resistance

### PACKAGING:

Component A (ISO) 200 L drum (225 kg)  
Component B (Resin) 200 L drum (205 kg)

## Sikalastic®-851 (A,B)



### USE

Sikalastic®-851 may only be used by experienced professionals.

#### On Concrete:

- Waterproofing on concrete bridge decks, membrane underneath hot rolled asphalt, certified in accordance to BBA/HAPAS
- Waterproofing on concrete bridge decks, membrane underneath mastic asphalt, tested in accordance to ETAG 033
- Waterproofing for submersed structures
- Waterproofing for cut and cover structures
- Waterproofing on walkways and balconies
- Waterproofing on floors and car park decks
- Water retaining structures in power plants
- Tank, bund and pit lining in fresh water areas of sewage and waste water treatment plants

#### On Steel:

- Truck bed lining

### CHARACTERISTICS

- Very fast reactivity and curing time
- Almost immediate return-to-service time
- Applicable in temperatures from -10 °C to +50 °C
- Performs in constant dry temperatures from -30 °C to +100 °C
- Excellent crack bridging properties
- Moderate chemical resistance
- Good abrasion resistance
- Not UV resistant

### PACKAGING:

Part A-211kg drums ~189 L (Isocyanate)  
Part B-202kg drums ~189L (Polyol/ - amine)  
Color:  
Part A-Transparent  
Part B-Grey

## Sikalastic®-8800 (A,B)



### USE

Sikalastic®-8800 may only be used by experienced professionals.

#### On concrete

- Abrasion resistant protective coating in industrial and manufacturing facilities
- Waterproofing for cut and cover structures
- Waterproofing for submersed structures
- Waterproofing on walkways and balconies
- Waterproofing on floors and car park decks
- Water retaining structures in power plants
- Secondary containment structures
- Tank, bund and pit lining in sewage and waste water treatment Plants

#### On steel

- Truck bed lining
- Waterproofing and wearing layer on steel ridges

### CHARACTERISTICS

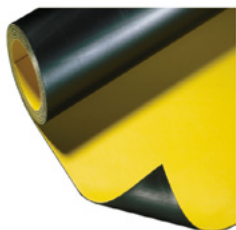
- Very fast reactivity and curing time
- Almost immediate return-to-service time
- Excellent crack bridging properties
- Good chemical resistance
- Excellent abrasion resistance
- UV light exposure may lead to yellowing

### PACKAGING:

Part-A 212kg drums ~189 L (Isocyanate)  
Part-B 191kg drums ~189 L (Polyamine)  
Color:  
Part A-Transparent  
Part B-Grey



**Sikaplan® WP 1100-30 HL**  
**Sikaplan® WP 1100-22 HL**  
**Sikaplan® WP 1100-20 HL**  
**Sikaplan® WP 1100-15 HL**



**USE**

Waterproofing of tunnels and basements against water ingress

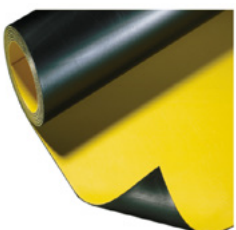
**CHARACTERISTICS**

- High resistance to ageing
- Based on virgin material with consistent quality
- Without DEHP (DOP) plasticisers
- With signal layer to indicate damages
- Optimized flexibility, tensile strength and multi-axial elongation
- Elastic material behaviour
- High resistance to mechanical influences
- Flexible in cold temperatures
- Suitable for contact with acidic soft water and alkaline environments
- Resistant to root penetration and micro-organisms
- Optimized workability, thermal weldable
- Can be installed on damp substrates
- Temporary UV stability for installation
- Self-extinguishing in fire

**PACKAGING:**

Sikaplan® WP 1100-30 HL  
 Sikaplan® WP 1100-22 HL  
 2.20 m (width) × roll length individual as specified  
 Sikaplan® WP 1100-20 HL  
 Sikaplan® WP 1100-15 HL  
 2.20 m (width) × roll length 20m or individual as specified

**Sikaplan® WP 1100-20 HLE**



**USE**

Waterproofing of tunnels and basements with doublelayer membrane systems

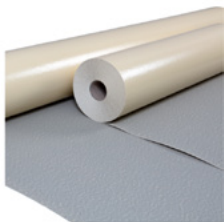
**CHARACTERISTICS**

- Embossing for easy flow of repair injection material
- High resistance to ageing
- Based on virgin material with consistent quality
- Without DEHP (DOP) plasticisers
- With signal layer to indicate damages
- Optimized flexibility, tensile strength and multi-axial elongation
- Elastic material behavior
- High resistance to mechanical influences
- Flexible in cold temperatures
- Suitable for contact with acidic soft water and alkaline environments
- Resistant to root penetration and micro-organisms
- Optimized workability, thermally weldable
- Can be installed on damp substrates
- Temporary UV stability for installation
- Self-extinguishing in fire

**PACKAGING:**

2.20 m (width) × roll length individual as specified

## Sikaproof® A-08 HC



### USE

SikaProof® A-08 HC may only be used by experienced professionals. Waterproofing and concrete protection for basements and other below ground concrete structures against ground water ingress. Suitable for use on:

- Reinforced concrete base slabs
- Reinforced concrete walls with both single and double-faced formwork
- Extension and reconstruction work
- Prefabricated structures
- Shotcrete structures

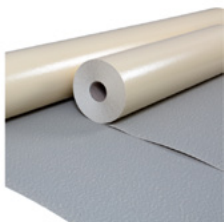
### CHARACTERISTICS

- S Fully bonded to the reinforced concrete structure
- No lateral water underflow between the concrete structure and the membrane system
- Specifically designed for hot climates
- Validated high water tightness
- High flexibility and crack-bridging
- Pre-applied, before fixing reinforcement & concrete placement
- Easy to install with fully adhered joints (no welding required)
- Cold-applied (no pre-heating or open flames)
- Good tear and impact resistant properties
- Temporarily resistant to weathering and UV-light during construction
- Highly durable and resistant to aging
- Resistant to aggressive elements in natural ground water and soil
- Can be combined with other approved Sika Waterproofing / Joint Sealing Systems

### PACKAGING:

PE-film  
Roll Width 2.0m  
Roll Length 25 m

## Sikaproof® A-12 HC



### USE

Damp-proofing, waterproofing and concrete protection for basements and other below ground concrete structures against ground water ingress. Suitable for use on:

- Below ground reinforced concrete slabs
- On reinforced concrete walls with both single and double-faced formwork
- Extensions and reconstruction work
- Prefabricated structures

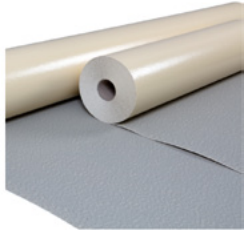
### CHARACTERISTICS

- Pre-applied, before the reinforcement is fixed and the concrete is poured
- Fully and mechanically bonded to the reinforced concrete structure
- No lateral water underflow between the concrete structure and the membrane system
- High water tightness tested according to various standards
- Easy to install with fully adhered joints (no welding required)
- Cold-applied (no pre-heating or open flames)
- Temporarily resistant to weathering and UV-light during construction
- Specially designed for use in hot climate areas
- Resistant to aging
- High flexibility and crack-bridging abilities
- Resistant to aggressive mediums in natural ground water and soil
- Can be combined with other approved Sika Waterproofing / Joint Sealing Systems

### PACKAGING:

PE-film  
Roll Width 1 and 2.0m  
Roll Length 20 m

## Sikaproof® A+ 12



### USE

Sikaproof® A+ 12 may only be used by experienced professionals. Damp-proofing, waterproofing and concrete protection for basements and other below ground concrete structures against ground water ingress. Suitable for use on:

- Reinforced concrete base slabs
- Reinforced concrete walls with single and double-faced formwork
- Extension and reconstruction works
- Prefabricated structures

### CHARACTERISTICS

- Pre-applied: Fixed before placing reinforcement and casting concrete
- Dual bond: Mechanical and adhesive bond with fresh concrete
- Fully and permanently bonded to the reinforced concrete structure
- No lateral water migration between the concrete structure and the membrane system
- High watertightness tested according to various standards
- Easy to install with fully adhered joints
- Cold-applied or thermally jointed
- Temporarily resistant to weathering and UV exposure during construction
- Resistant to aging
- High flexibility and crack-bridging capabilities
- Resistant to aggressive conditions in natural ground water and soil
- Can be combined with other approved Sika® Waterproofing / Joint Sealing Systems

### PACKAGING:

Roll Width 1 and 2.0m  
Roll Length 20 m

## Sikaproof® Tape A+



### USE

Sikaproof® Tape A+ may only be used by experienced professionals.

### CHARACTERISTICS

- Fully bonded to the concrete structure
- No lateral water migration (identical to Sikaproof® A+ membrane)
- High adhesion and sealing capability, especially in cold and damp conditions
- Simple and fast to install

### PACKAGING:

2 rolls packed in one cardboard box, each roll 25 m long and 150 mm width

## Sikaproof® Tape-150 A



### USE

Sikaproof® Tape-150 A is used for sealing transverse overlap joints, connections and details within the Sikaproof A membrane system (internal / fleece side) in combination with the Sikaproof ExTape-150.

### CHARACTERISTICS

- Fully bonded to the concrete structure
- No lateral water underflow (like Sikaproof® A system)
- High adhesion and sealing ability, especially in cool and damp conditions
- Easy and fast to install

### PACKAGING:

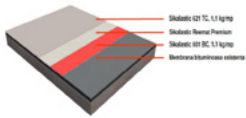
2 rolls packed in one cardboard box, each roll 25 m long and 150 mm width





# ROOFING SOLUTIONS

## SikaRoof® MTC-12



### USE

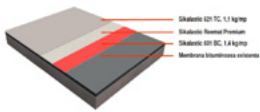
SikaRoof® MTC-12 may only be used by experienced professionals. SikaRoof® MTC-12 can be used as following:

- Roof waterproofing solution for new construction and refurbishment projects
- For roofs displaying complex detail areas and geometry, even when accessibility is limited
- For cost efficient life cycle extension of failing roofs
- In combination with Sikalastic®-621 TC - SR (traffic white RAL 9016) for cool roofs and solar roofs

### CHARACTERISTICS

- Proven technology - over 25-year track record
- One component - no mixing, easy and ready to use
- UV resistant - Highly reflective (RAL 9016) and resistant to yellowing
- Cold applied - requires no heat or flame
- Seamless roof waterproofing membrane
- Compatible with Sika® Reemat Standard - easy to detail
- Fast curing - free from resin damage almost immediately on application
- High elastic and crack-bridging - retains flexibility even at low temperatures. High root resistance
- Easily re-coated when needed - no stripping required
- Good adhesion to most substrates - see primer chart
- Vapour permeable - allows substrate to breathe
- Strong resistance to common atmospheric chemicals

## SikaRoof® MTC-15



### USE

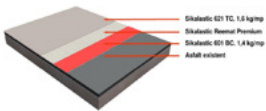
SikaRoof® MTC-15 may only be used by experienced professionals. SikaRoof® MTC-15 can be used as following:

- Roof waterproofing solution for new construction and refurbishment projects
- For roofs displaying complex detail areas and geometry, even when accessibility is limited
- For cost efficient life cycle extension of failing roofs
- In combination with Sikalastic®-621 TC - SR (traffic white RAL 9016) for cool roofs and solar roofs

### CHARACTERISTICS

- Proven technology - over 25-year track record
- One component - no mixing, easy and ready to use
- UV resistant - Highly reflective (RAL 9016) and resistant to yellowing
- Cold applied - requires no heat or flame
- Seamless roof waterproofing membrane
- Compatible with Sika® Reemat Standard - easy to detail
- Fast curing - free from resin damage almost immediately on application
- High elastic and crack-bridging - retains flexibility even at low temperatures. High root resistance
- Easily re-coated when needed - no stripping required
- Good adhesion to most substrates - see primer chart
- Vapour permeable - allows substrate to breathe
- Strong resistance to common atmospheric chemicals

## SikaRoof® MTC-18



### USE

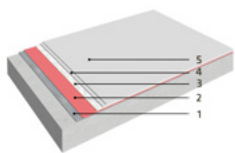
SikaRoof® MTC-18 may only be used by experienced professionals. SikaRoof® MTC-18 can be used as following:

- Roof waterproofing solution for new construction and refurbishment projects
- For roofs displaying complex detail areas and geometry, even when accessibility is limited
- For cost efficient life cycle extension of failing roofs
- In combination with Sikalastic®-621 TC - SR (traffic white RAL 9016) for cool roofs and solar roofs

### CHARACTERISTICS

- Proven technology - over 25-year track record
- One component - no mixing, easy and ready to use
- UV resistant - Highly reflective (RAL 9016) and resistant to yellowing
- Cold applied - requires no heat or flame
- Seamless roof waterproofing membrane
- Compatible with Sika® Reemat Standard - easy to detail
- Fast curing - free from resin damage almost immediately on application
- High elastic and crack-bridging - retains flexibility even at low temperatures. High root resistance
- Easily re-coated when needed - no stripping required
- Good adhesion to most substrates - see primer chart
- Vapour permeable - allows substrate to breathe
- Strong resistance to common atmospheric chemicals

## SikaRoof® MTC-22



### USE

SikaRoof® MTC-22 can be used as following:

- Roof waterproofing solution for new construction and refurbishment projects
- For roofs displaying complex detail areas and geometry, even when accessibility is limited
- For cost efficient life cycle extension of failing roofs
- In combination with Sikalastic®-621 TC - SR (traffic white RAL 9016) for cool roofs and solar roofs

### CHARACTERISTICS

- Proven technology - over 25 year track record
- One component/ no mixing, easy & ready to use
- UV resistant - Highly reflective (RAL9016) and resistant to yellowing
- Cold applied - requires no heat or flame
- Seamless roof waterproofing membrane
- Compatible with Sika® Reemat Premium
- Fast curing - free from resin damage almost immediately on application
- High elastic and crack-bridging - retains flexibility even at low temperatures. High root resistance
- Easily re-coated when needed -no stripping required
- Good adhesion to most substrates- see primer chart
- Vapour permeable - allows substrate to breathe
- Strong resistance to common atmospheric chemicals

## Sikalastic® 590



### USE

- For waterproofing solutions in both new construction and refurbishment projects
- For roofs with many details and complex geometry when accessibility is limited
- For cost efficient life cycle extension of failing roofs
- For reflective coating to enhance energy efficiency by reducing cooling costs (Sikalastic®-590 White)

### CHARACTERISTICS

- Good behavior under limited water ponding
- UV resistant and resistant to yellowing and weathering
- Highly elastic and crack-bridging
- Non-toxic and VOC compliant water-based coating
- One component - ready to use
- Excellent adhesion on porous and non-porous substrates
- Seamless waterproofing membrane
- Water vapour permeable

### PACKAGING:

20 kg Plastic pails  
Grey and white

## Sikalastic®-612



### USE

- Water-proofing of flat and pitched roof structures
- Treatment of new construction and refurbishment of existing structures
- Applicable to existing concrete, asphalt, roofing felt, brickwork, asbestos cement decks (subject to condition and priming requirements).

### CHARACTERISTICS

- Single component
- Cold applied
- Can be reinforced where required
- Seamless, fully bonded membrane based upon moisture-triggered chemistry
- Vapour permeable & Elastic
- Good adhesion to most substrates – see table
- No mixing, easy and ready to use
- Moves with normal thermal movement - Retains flexibility even at low temperatures
- Reinforced system - easy to detail
- Free from rain damage almost immediately on application (see table)
- Economic – provides a cost-efficient life cycle extension of failing roofs
- Allows substrate to breathe
- Requires no heat or flame
- Easily recoated when needed - no stripping required

### PACKAGING:

15L (~21.3 kg), single  
use pails  
White or Grey

## Sikalastic®-614



### USE

- Sikalastic®-614 may only be used by experienced professionals.
- For roof waterproofing solutions in both new construction and refurbishment projects
- For roofs displaying complex detail areas, even when accessibility is limited
- For cost efficient life cycle extension of failing roofs
- For waterproofing underneath tiles bonded with adhesives on balconies and terraces

### CHARACTERISTICS

- Single component - no mixing, easy and ready to use
- Cold applied - requires no heat or flame
- Seamless membrane
- Compatible with Sika® Reemat Premium - easy to detail
- Easily recoated when needed - no stripping required
- Economic - provides a cost-efficient life cycle extension of failing roofs
- Vapour permeable - allows substrate to breathe
- Elastic - retains flexibility even at low temperatures
- Good adhesion to most substrates - see table
- Fast Curing - free from rain damage almost immediately on application

### PACKAGING:

15 L (~20.7 kg) metal  
pail  
5 L (~7.1 kg) metal pail

## Sikalastic®-618



### USE

- Water-proofing of flat and pitched roof structures
- Treatment of new construction and refurbishment of existing structures
- Applicable to existing concrete, roofing felt, brickwork, cementitious substrates, cement decks (subject to condition and priming requirements).

### CHARACTERISTICS

- Single component
- Cold applied
- Can be reinforced where required
- Seamless membrane based upon moisture-triggered chemistry
- Vapour permeable
- Elastic
- Good adhesion to most substrates

### PACKAGING:

15lt (~20.7 kg), pails  
White, Grey and Green



## Sikalastic®-625



### USE

- Roof waterproofing for new construction and refurbishment projects
- Waterproofing of flat and pitched roof structures, communal walkways, podium decks and roof terraces
- Waterproofing structures with numerous details such as penetrations, drains, roof lights and complex geometry
- Waterproofing existing substrates of concrete, bituminous felt and coatings, brick, stone, asbestos cement, wood, asphalt etc.
- Only for exterior use

### CHARACTERISTICS

- Thickness: ~1,50 mm.
- Low maintenance
- Seamless
- 1-Part ready to use
- Cold applied - requires no heat or flame
- Low temperature application > 2 °C
- Easy and quick application by spray, brush or roller
- Economic - provides a cost-efficient life cycle extension of failing roofs
- Water vapour permeable
- Retains flexibility at low temperatures
- Moisture triggered technology develops early rain resistance
- Elastic properties - tolerant of thermal movement
- Impact and tear resistant

**PACKAGING:**  
15 L container

## Sikalastic®-641



### USE

- Sikalastic®-641 may only be used by experienced professionals.
- Top coat for SikaRoof® i-Cure-12/15/18/22 systems in both new construction and refurbishment projects
- Base coat and top coat for the ETA approved, low odour Sikalastic®-641/-641 Economic, Standard, Enhanced, Premium and Premium Fleece systems
- Waterproofing structures with numerous details such as penetrations, drains, roof lights and complex geometry
- Cost efficient service life extension of failing roofs
- As a reflective top coat (traffic white ~RAL 9016) providing cool roof characteristics and solar efficient roofs
- For odour sensitive areas
- Only for exterior use

### CHARACTERISTICS

- 1-part, no mixing, easy and ready to use
- Thickness: ~1,30-2,2 mm
- Resistant to UV exposure
- Highly reflective (~RAL 9016)
- Resistant to yellowing
- Cold applied - requires no heat or flame
- Low odour - suitable for odour sensitive projects
- High solids content
- Seamless
- Easy to detail with Sika® Reemat Premium
- Easily recoated - no removal required
- Vapour permeable

**PACKAGING:**  
5 and 15 L containers

## Sikalastic®-701



### USE

- Sikalastic®-701 may only be used by experienced professionals.
- Top coat for aromatic Liquid Applied Membranes
  - Top coat applied over 2-C spray applied PU/PUA systems
  - Top coat for existing water-proofing system of flat and pitched roof structures, communal walkways, podium decks and terrace roofs.

### CHARACTERISTICS

- Long term weathering performance
- Excellent weathering performance
- Aliphatic polyurethane, good UV and yellowing resistance
- Good chemical resistance
- Low soiling and easily cleanable

**PACKAGING:**  
12.5 Kg pack size A+B:  
Part A 10.0 Kg  
Part B 2.5 Kg

## Sikalastic®-708 UV



### USE

- Sikalastic®-708 UV may only be used by experienced professionals.
- UV protection of the 2C PU/PUA waterproofing membranes either cold and hot-applied
- Top coat for existing waterproofing system of flat and pitched roof structures, communal walkways, podium decks and terrace roofs
- Suitable as top coat for areas with vehicle or pedestrian traffic

### CHARACTERISTICS

- Aliphatic protective topcoat for aromatic polyurethane or polyurea waterproofing membranes.
- Fast curing
- Good adhesion properties
- High hardness and resistance achieved with a single application.
- Excellent gloss and colour retention
- Aliphatic polyisocyanate basis. No discolouration
- Good weathering resistance
- Low soiling and easily cleanable
- Resistant to ponding water

**PACKAGING:**  
Component-A 11 KG  
Component-B 4 KG  
pigmented  
Component-A 11.6 KG  
Component-B 3.4 KG

## Sikalastic®-709



### USE

- For use as waterproofing membrane on new roof structures and for refurbishment of old roofs
- For use on fully exposed roofs to UV, protected by the use of an aliphatic topcoat
- For other concrete structures and on non-trafficked concrete areas with an additional top coat for UV protection.

### CHARACTERISTICS

- Crack bridging ability
- Highly elastic membrane
- Fast curing
- Thick layer (up to 2kg/m<sup>2</sup> applied in a single layer)
- Cold applied, self levelling behavior
- Desired thickness in one layer application (up to 2.2 kg/m<sup>2</sup> applied in a single layer)
- Waterproofing kit achieved with or without the use of reinforcement
- Can be covered with an aliphatic

### PACKAGING:

Kit of 26.5 kg (A+B):  
Component A 25 kg  
Component B 1.5 kg

## Sikalastic®-835i



### USE

For roof waterproofing solutions in both new construction and refurbishment projects:

- Existing bituminous membranes
- Terraces
- Roof screeds

Coating for concrete protection according to the requirements of EN 1504-2, for:

- Decks
- Bridges
- Tunnels

Metal and concrete water retaining structures:

- Dams
  - Canals
  - Tanks
  - Safety tanks for petrochemical plants
  - Pipelines on roofs suitable for vehicle access and car park decks
- Coatings for scenery and decorative structures.

### CHARACTERISTICS

- Very fast curing time
- Easy to detail, even when accessibility is limited
- High elasticity (>250%)
- Good crack bridging properties (Class A4 at +23°C / B3.1 at -20°C EN1062-7)
- High impact, abrasion and puncture resistance
- Good resistance to many chemicals
- Applicable in temperatures from -15°C to +70°C
- Performs in constant dry temperatures from -30°C to +140°C
- Total solid composition, without VOC
- Excellent anticorrosion protection
- Suitable for most substrates (concrete, metal, bituminous membrane, masonry and wood)

### PACKAGING:

Part A (resin) 205 kg  
black drums  
Part B (Isocyanate) 225  
kg red drums

## Sikalastic®-833 R - ALU



### USE

Designed for the following waterproofing applications:

- New construction and refurbishment projects
- Balcony and terrace decks underneath a protective layer (i.e. ballast, paving slabs, tiles)
- Waterproofing membrane for concrete, metal, pedestrian decks, stadium seating floor areas
- Solar reflective surfaces
- For exterior use only

### CHARACTERISTICS

- Good crack-bridging properties
- Seamless finish or textured when over-sprayed
- Good resistance to UV exposure
- Thickness: ~ 2,0-2,4 mm
- Good elasticity and elongation at break
- Good abrasion resistance
- Fast application
- Applied by 2-Component hot spray equipment
- Easily detailed around complex geometries
- Good chemical resistance
- Available in various colours
- Performs in constant temperatures from -30°C to +100°C
- Good adhesion to many substrates with the appropriate Primers
- Can be applied over existing corrugated metal roofs

### PACKAGING:

Part A (Polyamide) 192  
kg drum  
Part B (Isocyanate) 208  
kg drum

## Sikalastic®-851 R



### USE

Sikalastic®-851 R may only be used by experienced professionals.

- For use as a waterproofing membrane on flat and pitched roof structures with additional top coat for UV-protection for exposed roofs.
- For use as a waterproofing membrane underneath planting or hard landscaping on podium areas.
- For use as a waterproofing membrane underneath XPS insulation as part of an inverted or vegetative roof system.
- For use as a waterproofing membrane for other concrete structures and on non-trafficked concrete areas with an additional top coat for UV-protection.

### CHARACTERISTICS

- Solvent free
- Fast application: application with 2-part hot spray equipment
- Fast curing: over coating with top coat possible after approximately 10 minutes
- Seamless waterproofing membrane
- High Solids: contains no fillers
- Excellent crack-bridging properties
- Highly elastic and crack bridging
- Low viscosity
- Water vapour permeable allows the substrate to breathe
- Good adhesion to most substrates
- 12 months shelf life

### PACKAGING:

Component-A 211 kg drum Clear / brownish  
Component-B 202 kg drum Grey or yellowish

## Sikalastic®-852 R



### USE

Sikalastic®-852 R may only be used by experienced professionals. For the following waterproofing applications:

- Flat and sloping fully exposed roofs to UV, protected by an aliphatic topcoat
- New construction and refurbishment projects
- Concealed and buried roofs
- Exposed roofs on regulated markets according to ETAG 005.

### CHARACTERISTICS

- Thickness: ~1,9 mm
- Seamless finish
- Good tear resistance
- Fast application
- Applied by 2-component hot spray equipment
- Easily detailed around complex geometries
- Good chemical resistance
- Available in various colours
- Good adhesion on most of building materials, with the appropriate primers
- Suitable substrates: concrete, cementitious roof screeds, bituminous felts and coatings, metal, brickwork, asbestos cement, ceramic tiles.

### PACKAGING:

Part A (Resin) 188 kg drums  
Part B (ISO) 208 kg drums  
Part C (Colour paste to add into Part A) 4 kg

## Sikalastic®-708 UV



### USE

- Sikalastic®-708 UV may only be used by experienced professionals.
- UV protection of the 2C PU/PUA waterproofing membranes either cold and hot-applied
- Top coat for existing waterproofing system of flat and pitched roof structures, communal walkways, podium decks and terrace roofs
- Suitable as top coat for areas with vehicle or pedestrian traffic

### CHARACTERISTICS

- Aliphatic protective topcoat for aromatic polyurethane or polyurea waterproofing membranes.
- Fast curing
- Good adhesion properties
- High hardness and resistance achieved with a single application.
- Excellent gloss and colour retention
- Aliphatic polyisocyanate basis. No discolouration
- Good weathering resistance
- Low soiling and easily cleanable
- Resistant to ponding water

### PACKAGING:

Component-A 11 KG  
Component-B 4 KG pigmented  
Component-A 11.6 KG  
Component-B 3.4 KG

## Sikalastic®-859 R



### USE

- Sikalastic®-859 R Ultimate may only be used by experienced professionals.
- For use as waterproofing membrane on new roof structures and for refurbishment of old roofs
- For use on fully exposed roofs to UV, protected by the use of an topcoat
- For use as protective coating (EN1504-2) for concrete structures on non-trafficked areas or use as a waterproofing membrane
- For other concrete structures and on non-trafficked concrete areas with an additional top coat for UV-protection.
- For use as a waterproofing membrane underneath planters or hard landscaping on podium areas

### CHARACTERISTICS

- Friend of the environment - does not contain VOC
- No weight losses
- No secondary reaction products
- Resistant to atmospheric agents
- Low permeability values

### PACKAGING:

Part A (ISO) in drums of 225 kg.  
Part B (RESIN) in drums of 205 kg

## Sikalastic®-560



### USE

- For roof waterproofing solutions in both new construction and refurbishment projects
- For roofs with many details and complex geometry when accessibility is limited
- For cost efficient life cycle extension of failing roofs
- For reflective coating to enhance energy efficiency by reducing cooling costs

### CHARACTERISTICS

- One-component - ready to use
- Seamless waterproofing membrane
- UV resistant and resistant to yellowing & weathering
- Highly elastic and crack-bridging
- Non-toxic and VOC compliant water-based coating
- Excellent adhesion on porous and non-porous substrates
- Water vapour permeable - allows the substrate to breathe

#### PACKAGING:

20 kg Containers  
Color: White

## Sikalastic®-505



### USE

- For exposed roof waterproofing solutions in both new construction and refurbishment projects
- For exposed roofs with many details and complex geometry when accessibility is limited
- Waterproofing underneath screeds in wet rooms
- For reflective coating to enhance energy efficiency by reducing cooling costs

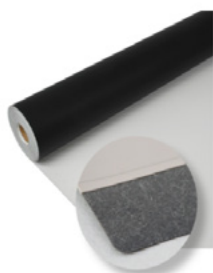
### CHARACTERISTICS

- UV resistant and resistant to yellowing and weathering
- Highly elastic and crack-bridging
- One component - ready to use
- Excellent adhesion on porous and non-porous substrates
- Seamless, fully bonded waterproofing membrane
- Water vapour permeable

#### PACKAGING:

20 kg Plastic Pails  
Color: White

## Sarnafil® TG 66



### USE

Roof waterproofing membrane for roofs with ballast(example gravel, concrete slabs, green roof) and / or exposed flat roofs:

- Loosely laid and Ballasted roofs
- Green roofs
- Utility roofs
- Inverted roofs

Roof waterproofing membrane for exposed roof junction zones:

- Roof waterproofing for junctions and flashings, example wall and parapet junctions, roof lights, etc. which are permanently exposed in installations of Sarnafil® TG 66-20, 18, 15, 12 roof waterproofing systems with ballast.
- Roof waterproofing for junctions and flashings in installations of all types of
- Sarnafil® TS 77 and TG 76 Felt exposed roof waterproofing systems

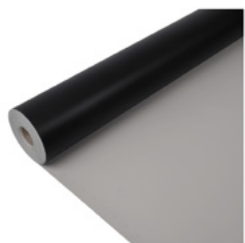
### CHARACTERISTICS

- Proven performance over decades
- Resistant to micro-organisms
- Resistant to root penetration
- High dimensional stability due to glass fleece inlay
- Compatible to bitumen
- Resistant to permanent UV exposure
- Resistant against impact load and hail
- Resistant to all common environmental influences
- Resistant to mechanical influences
- Hot air welding without use of open flame
- Recyclable

#### PACKAGING:

Width 2m  
TG 66-20  
Roll W 60KG & L 15m  
TG 66-18  
Roll W 54KG & L 15m  
TG 66-15  
Roll W 60KG & L 20m  
TG 66-12  
Roll W 60KG & L 25m

## Sarnafil® TS 77



### USE

Waterproofing membrane for:

- Mechanically fastened roofing systems.
- Enhancement of solar reflection of existing TPO roofs (relevant only for colour RAL 9016 SR)

### CHARACTERISTICS

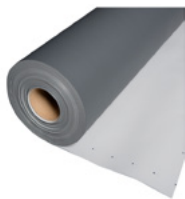
- Proven performance over decades.
- Various colours available.
- High reflectance properties for excellent cool roofing characteristics (relevant only for color RAL 9016 SR).
- Resistant to permanent UV exposure.
- High dimensional stability due to glass fleece inlay.
- Resistant to permanent wind exposure.
- Resistant against impact load and hail.
- Resistant to all common environmental influences.
- Resistant to micro-organisms.
- Resistant to root penetration.
- Compatible to old bitumen.
- Hot air welding without use of open flames.
- Recyclable

#### PACKAGING:

Width 2m  
TG 77-20  
Roll W 66KG & L 15m  
TG 77-18  
Roll W 59.50KG & L 15m  
TG 77-15  
Roll W 66KG & L 20m  
TG 77-12  
Roll W 66KG & L 25m



## Sarnafil® S 327



### USE

Waterproofing membrane for:

- Mechanically fastened roofing systems.

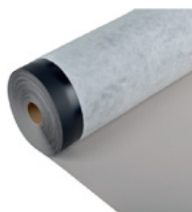
### CHARACTERISTICS

- Proven performance over decades.
- Resistant to permanent UV irradiation.
- Resistant to permanent wind exposure.
- Resistant against impact load and hail.
- Resistant to all common environmental influences.
- Hot air welding without use of open flames.
- High water vapour permeability
- Recyclable

### PACKAGING:

Width 2m  
S 327-20  
Roll W 72KG & L 15m  
S 327-18  
Roll W 66KG & L 15m  
S 327-15  
Roll W 72KG & L 20m  
S 327-12  
Roll W 60KG & L 20m

## Sarnafil® TG 76 Felt



### USE

Roof waterproofing membrane for fully bonded exposed roofs with Sarnacol® 2142 S.

Approved standards

- Slated/mineralized bitumen sheets; new and aged
- OSB, plywood, fibre cement boards
- Mineral fibre boards (Example: Bondrock MV)
- PUR/PIR insulation boards, (Example: Sarnatherm PIR GT, Kingspan TR 27)
- Concrete, lightweight concrete

### CHARACTERISTICS

- Proven performance over decades
- Various colours available
- Resistant to permanent UV irradiation
- High dimensional stability due to glass fleece inlay
- Resistant to all common environmental influences
- Resistant to micro-organisms
- Compatible to old bitumen
- Hot air welding without use of open flames
- Recyclable

### PACKAGING:

Width 2m  
TG 76-20 Felt  
Roll W 70KG & L 15m  
TG 76-18 Felt  
Roll W 63KG & L 15m  
TG 76-15 Felt  
Roll W 74KG & L 20m  
TG 76-12 Felt  
Roll W 60KG & L 20m

## Sarnafil® G 410 L Felt



### USE

Sarnafil® G 410 L Felt can be used as a waterproofing membrane for fully adhered, exposed flat roofs

### CHARACTERISTICS

- Outstanding resistance to weathering, including permanent UV irradiation
- Excellent weldability
- Excellent flexibility in cold temperatures
- Excellent dimensional stability
- High resistance to mechanical impact
- High water vapour permeability
- High solar reflectance (in case of white colour top layer)
- Available in various colours
- Reduced dirt pick-up due to lacquer coating
- Recyclable

### PACKAGING:

PE-foil Roll  
Width 2.0m and Length depends membrane thickness  
1.2 mm X 20.0 M (approx. 74kg roll)  
1.5 mm X 20.0 M (approx. 86kg roll)  
2.0 mm X 15.0 M (approx. 87kg roll)

## Sarnafil® G 410 L



### USE

Roof waterproofing membrane for roofs with ballast (example: gravel, concrete slabs, green roof):

- Loosely laid and ballasted
- Green roofs
- Utility roofs
- Inverted roofs

Roof waterproofing membrane for exposed roof junction zones:

- Roof waterproofing for junctions and flashings, example: wall and parapet junctions, roof lights, etc. which are permanently exposed in roof lights, etc. which are permanently exposed in installations of Sarnafil® G 410-20, 18, 15, 12 L roof waterproofing systems with ballast.
- Fully bonded junction areas with contact adhesive Sarnacol®-2170 in mechanically fastened roof systems with Sarnafil® S 327-types

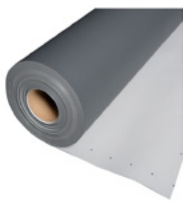
### CHARACTERISTICS

- Proven performance over decades.
- Lacquer coated surface.
- High dimensional stability due to glass fleece inlay.
- Resistant to permanent UV irradiation.
- High water vapour permeability.
- Resistant to all common environmental influences.
- Hot air welding without use of open flames.
- Recyclable.

### PACKAGING:

PE-foil Roll  
Width 2.0m  
G 410-20  
Roll W 73.20KG & L 15m  
G 410-18  
Roll W 66KG & L 15m  
G 410-15  
Roll W 73KG & L 20m  
G 410-12  
Roll W 72KG & L 20m

## Sarnafil® G 410-18 EL Felt



### USE

- This product may only be used by experienced professionals.
- Fully bonded, roof waterproofing membrane for exposed roofs
- Enhancement of solar reflection of existing PVC roofs (~RAL 9016 SR)

### CHARACTERISTICS

- Proven performance over decades
- Lacquer coated surface
- Various colours available
- Fast installation with Sarnacol® adhesives
- High reflectance properties for excellent cool roofing characteristics (relevant only for colour RAL 9016 SR).
- Resistant to UV exposure
- High dimensional stability due to glass fleece inlay
- High water vapour permeability
- Resistant to all common environmental influences
- Felt backing compatible with old bitumen surfaces. Heat weldable.

### PACKAGING:

PE-foil Roll  
Width 2.0m  
Length 15 m  
Weigh 78KG

## Sikaplan® TB



### USE

Roof waterproofing membrane for roofs with ballast (example: gravel, concrete slabs, green roof) and / or exposed flat roofs:

- Loosely laid and ballasted
- Green roofs
- Utility roofs
- Inverted roofs

Roof waterproofing membrane for exposed roof junction zones:

- Roof waterproofing for junctions and flashings, e.g. wall and parapet junctions, roof lights, etc., which are permanently exposed in installations of Sikaplan® TB- 18, 15, 12 roof waterproofing systems with ballast.
- Roof waterproofing for junctions and flashings in installations of Sikaplan® TM exposed roof waterproofing systems.

### CHARACTERISTICS

- Resistant to permanent UV irradiation
- High dimensional stability due to glass fleece inlay
- Resistant against impact load and hail
- Resistant to all common environmental influences
- Resistant to mechanical influences
- Resistant to micro-organisms
- Resistant to root penetration
- Compatible to old bitumen
- Hot air welding without use of open flames
- Recyclable

### PACKAGING:

PE-foil Roll  
Width 2.0m  
Sikaplan TB-18  
Roll W 55.20KG & L 15m  
Sikaplan TB-15  
Roll W 60KG & L 20m  
Sikaplan TB-12  
Roll W 60KG & L 25m

## Sikaplan® TM



### USE

Waterproofing membrane for:

- Mechanically fastened roofing systems

### CHARACTERISTICS

- Resistant to permanent UV irradiation
- Resistant to permanent wind exposure
- Resistant against impact load and hail
- Resistant to all common environmental influences. Recyclable.
- Resistant to micro-organisms
- Compatible to old bitumen
- Hot air welding without use of open flames

### PACKAGING:

PE-foil Roll  
Width 2.0m  
Sikaplan TM-18  
Roll W ± 59KG & L 15m  
Sikaplan TM-15  
Roll W ± 66KG & L 20m  
Sikaplan TM-12  
Roll W ± 60KG & L 25m

## Sika® Reemat Premium



### USE

- Reinforcement for Sikalastic®, Sikafloor®, Sikagard® and SikaRoof® MTC Systems
- Reinforcement for SikaRoof® MTC Detailing
- For new construction and refurbishment projects
- For roofs with many details and complex geometry even when accessibility is limited.

### CHARACTERISTICS

- Easy and quick application
- Easy to adjust to complicated details
- Ensures the correct thickness of the base coat
- Enhance the crack-bridging properties of the system
- Enhance mechanical properties of the system

### PACKAGING:

Roll  
1.3 m wide by 150 m long  
1.3 m wide by 90 m long  
0.3 m wide by 150 m long

## Sika® Joint Tape SA



### USE

- Reinforcement of joints between cover boards on insulation
- Reinforcement of joints between plywood deck panels
- Reinforcement of joints and seams in metal roofing
- Stripping in of metal flanges to structural deck

### CHARACTERISTICS

- Self-adhering, no primer required for most applications
- Fleece facer allows positive resin/coating bond
- Stretches with membrane to accommodate thermal and structural movement
- Imparts additional strength and durability
- Conforms to substrate contours and flashing conditions

### PACKAGING:

3" (76.2 mm) or 6" (152.4 mm) w x 50' (15.24 m) rolls.  
Carton contains 8 x 3" wide rolls and 4 x 6" wide rolls  
100 of total



# BUILDING FINISHES



## Sikaceram®-117 QA



### USE

- Suitable for bonding high absorption ceramic tiles
- Indoor application without primer over concrete, cement mortars, bricks
- Suitable for floors and walls application

### CHARACTERISTICS

- Single component system
- Easy to mix and use
- Good workability
- Excellent bond strength

**PACKAGING:**  
25 KG BAG

## Sikaceram®-118 QA



### USE

- Laying all kind of ceramic tiles
- Laying marbles and natural stone, provided not sensitive to water
- Application indoor for walls and floors
- Application outdoor for floors
- Suitable for wet areas

### CHARACTERISTICS

- Easy to use
- Good adhesion to most substrates (concrete, cementitious mortar, stone, bricks)
- Good workability and thixotropic consistency
- Water and weather resistant
- Extended open time

**PACKAGING:**  
25 kg bag

## Sikaceram®-550 Silent



### USE

As an adhesive for bonding the following types of tiles:

- All kinds of medium, large-sized tiles
- Grès porcelain
- Ceramic
- Earthenware
- Glazed
- Porcelain
- Stoneware
- Unglazed

Bonding tiles for the following interior applications:

- Bathrooms
- Residential environments
- Existing floor finishes
- Heated floors (Water and electric systems)
- Leisure centres
- Wet areas (occasionally wet)
- Overlaying existing firmly fixed ceramic tiles or stones

### CHARACTERISTICS

- Impact sound insulation properties
- Layer thickness < 10 mm
- Normal setting
- Highly deformable
- Fibre reinforced
- Suitable for heated floors (Water and electric systems)
- High coverage
- 1-part
- Extended open time
- Smooth application

**PACKAGING:**  
15 kg bag

## Lanko TileBond



### USE

- For the installation of absorptive and non-absorptive wall and floor tiles for interior and exterior surfaces.
- Suitable for tiling on concrete, rendered brickwork and blockwork.

### CHARACTERISTICS

- For interior walls and floors.
- Premixed, just add water.
- Prolonged open time.
- Excellent bond strength and consistency.
- Non-toxic, non-flammable.
- Water-resistant.
- VOC - None (<10µg/lit)

**PACKAGING:**  
25 kg bag

## Lanko TTB



### USE

Interior and exterior walls and floors.

- Laying tiles, marble or natural stone onto concrete render; blockwork and rendered brickwork surfaces.
- Waterproof, therefore can be used to lay tiles in wet areas such bathrooms etc.

### CHARACTERISTICS

- For interior and exterior walls and floors.
- Easy to use, just mix with water.
- Waterproof.
- Non-toxic, non-flammable.
- High build to facilitate layering.
- Quick grip.
- VOC - None (<10µg/lit)

**PACKAGING:**  
25 kg bag

## Lanko TTB+



### USE

Interior and exterior walls and floors.

- Laying tiles, marble or natural stone onto concrete render; blockwork and rendered brickwork surfaces.
- Waterproof, therefore can be used to lay tiles in wet areas such as bathrooms etc.

### CHARACTERISTICS

- For interior and exterior walls and floors.
- Easy to use, just mix with water.
- Waterproof.
- Non-toxic, non-flammable.
- High build to facilitate layering.
- Quick grip.

**PACKAGING:**  
25 kg bag

## Lanko Sac 28



### USE

- High bonding performance and deformability makes SAC 28+ suitable for bonding reduced porosity natural stone or tiles onto new or old substrates.
- Suitable for very large formats, up to 3 600 cm<sup>2</sup>.
- Waterproof, therefore suitable for bonding on submerged substrates: ponds, tanks, swimming pools, water sport centres.
- Permanent flexibility makes it resistant to thermal shock.
- Suitable for bonding on non-permissible substrates such as metal and film coatings.

### CHARACTERISTICS

- High bonding performance.
- Suitable for very large formats.
- Permanently flexible.
- Waterproof
- Suitable for bonding metal.
- Internal & external walk & floors
- VOC 1.6g/L

**PACKAGING:**  
25 kg bag

## Lanko Sac 28+



### USE

- High bonding performance and deformability makes SAC 28+ suitable for bonding reduced porosity natural stone or tiles onto new or old substrates.
- Suitable for very large formats, up to 3 600 cm<sup>2</sup>.
- Waterproof, therefore suitable for bonding on submerged substrates: ponds, tanks, swimming pools, water sport centres.
- Permanent flexibility makes it resistant to thermal shock.
- Suitable for bonding on non-permissible substrates such as metal and film coatings.

### CHARACTERISTICS

- High bonding performance.
- Suitable for very large formats.
- Permanently flexible.
- Waterproof.
- Suitable for bonding metal.
- No Vertical Slip (Non-Sagging)
- CASIET Standard
- VOC < 0.1g/L

**PACKAGING:**  
25 kg bag

## Lanko Floorbond



### USE

- Fixing ceramic tiles, slates, marbles, granite, natural stone.
- Installing large size tiles on interior and exterior floors.
- Installing tiles on irregular substrate. Enhance with Lanko Mortaflex ECO or Lanko Davelastic for installation of large or heavy tiles, in external or in immersed.

### CHARACTERISTICS

- Easy to use
- Economical
- Bedding thickness range from 10mm to 30mm
- Classification: C1 (BS EN Standards)

**PACKAGING:**  
25 kg bag

## Lanko Colorgrout



### USE

- Suitable for wall and floor tiling in joints up to 5 mm wide.
- Suitable for wet areas such as swimming pools and bathrooms.
- In special areas like kitchens, hospitals and cleanrooms where a stain and fungal resistant joint filler is required.

### CHARACTERISTICS

- Available in a wide range of colours.
- Prevents mould.
- Good adhesion to absorptive and non-absorptive surfaces.
- Does not stain tiles.
- Excellent ultra-violet (U.V.) resistance.
- Waterproof\*.

**PACKAGING:**  
20 kg bag



## Lanko Colorgrout+



### USE

- Suitable for wall and floor tiling in joints up to 5 to 10mm wide.
- Suitable for wet areas such as swimming pools and bathrooms.
- In special areas like kitchens, hospitals and cleanrooms where a stain and fungal resistant joint filler is required.

### CHARACTERISTICS

- Available in a wide range of colours.
- Prevents mould.
- Good adhesion to absorptive and non-absorptive surfaces.
- Does not stain tiles.
- Excellent ultra-violet (U.V.) resistance.
- Waterproof\*.

**PACKAGING:**  
20 kg bag

## Lanko-572



### USE

- Interior and exterior walls
- Interior and exterior floors

### CHARACTERISTICS

- Suitable for large-size tiles up to 10 000 cm<sup>2</sup>
- Fibre-enriched: crack-resistant
- Ideal for slim tiles
- Single-component
- Versatile

**PACKAGING:**  
25 kg bag

## Lanko EA



### USE

- Water cleanable, fresh grout can be easily cleaned with water eliminating expensive solvents and harsh cleaning solution that may attack the grout.
- Superior adhesion to wide variety of substrates.
- Excellent chemical resistance to dilute acids, alkalies, oils, grease, detergents, cleaning solutions, etc.
- High compressive, tensile, and bond strength.
- Can be used in contact with food or potable water.

### CHARACTERISTICS

- Flexible and waterproof.
- Durable. Weather and shock resistant.
- Odorless, non-toxic, non-flammable.
- Long open time.
- Exterior and interior application.
- Can be applied on damp surface.
- Water cleanable
- VOC 25 Gms/Ltr

**PACKAGING:**  
20 kg kit

## Lanko EG



### USE

- Water cleanable, fresh grout can be easily cleaned with water eliminating expensive solvents and harsh cleaning solution that may attack the grout.
- Superior adhesion to wide variety of substrates.
- Excellent chemical resistance to dilute acids, alkalies, oils, grease, detergents, cleaning solutions, etc.
- High compressive, tensile, and bond strength.
- Can be used in contact with food or potable water.

### CHARACTERISTICS

- Flexible and waterproof.
- Durable. Weather and shock resistant.
- Odorless, non-toxic, non-flammable.
- Long open time.
- Exterior and interior application.
- Can be applied on damp surface.
- Antibacterial & Antifungus
- Non-sagging & Stain Resistance
- Water Cleanable up to 60 minutes
- VOC 35 Gms/Ltr

**PACKAGING:**  
14 kg kit

## Lanko PRC 1



### USE

LANKO RUSH COAT PRC-1 is ready mixed mortar based on mineral bonding agent used for preparing surfaces before the rendering. it improves the adhesion of new plaster, cement render, applied on masonry block and fair face concrete. The PRC-1 can be applied traditional-ly by hand using a Tyrolene.

### CHARACTERISTICS

- Ready to Use
- Good Adhesion
- Durable

**PACKAGING:**  
40 kg bag

## Lanko PRC 2



### USE

LANKO PRC-2 is ready mixed mortar based on mineral bonding agent used for preparing surfaces before rendering. It improves adhesion of new plaster, cement render, applied on the masonry block & regular block. The PRC-2 applied traditionally by hand using a Tyrolene.

### CHARACTERISTICS

- Ready to Use
- Good Adhesion
- Durable

**PACKAGING:**  
40 kg bag

## Lanko PP-1



### USE

- The plaster is now ready for application by machine or manually with a plastering trowel. Apply the plaster on the prepared surface at a thickness between 10 and 20 mm in one layer.
- Finish the surface with a soft synthetic sponge and a steel float.
- Let the product set properly on the surface before any curing.
- If more thickness is required, the application should be done in 2 layers. Let the first layer rough. Cure it. Apply the second layer at least 48 hrs after the first one.

### CHARACTERISTICS

- Ready to use
- Good workability
- Good adhesion
- Durable
- Suitable for regular and AAC blocks

**PACKAGING:**  
40 kg bag

## Lanko TB-F



### USE

- Internal or external laying of A.A.C. (Aerated Autoclaved) blocks or the equivalent.

### CHARACTERISTICS

- Easy Application
- Suitable for temperatures of +5°C to +45°C
- Cost Effective, & Good Open Time
- VOC (<10µg/lt)

**PACKAGING:**  
40 kg bag

## Lanko TB-F+



### USE

- Internal & External laying of Concrete blocks or the equivalent. Void filling grout of Concrete blocks or the equivalent.

### CHARACTERISTICS

- Easy Application
- Suitable for temperatures of +5°C to +45°C
- Cost Effective
- Good Open Time

**PACKAGING:**  
40 kg bag

## Lanko Granatech



### USE

- Grouting large areas.
- Laying cropped setts.
- Suitable for pedestrian traffic at 2hrs.
- Suitable for vehicular traffic at 6hrs

### CHARACTERISTICS

- Quick to apply, High strength
- Economical & cost-effective
- Aesthetically pleasing finish
- Hydraulic binders chloride free
- Grey powder ready to mix
- Aggregate size: 0-2 mm
- Hardened density: 2.2
- Pot life: 45 mins

**PACKAGING:**  
25 kg bag

## Lanko FBC



### USE

- Contact surfaces must be sound, clean and provide a good mechanical key. Remove any loose material, laitance, plaster, paint and oily deposits.

### CHARACTERISTICS

- BS 7533 Compliant
- Cost Effective
- Available in Bulk Silos or bags

### PACKAGING:

25 kg bag

## Lanko Monodecor GT



### USE

- The substrate must be clean, sound, dust-free and without any traces of plaster or paint.
- Planimetry and plumbline must be compliant with building regulations in force.
- On concrete and non-absorbent substrates apply a rough coating made up by adding 1 litre of LANKO 751 bonding agent to the mixing water for a 30kg bag of MONO-DECOR GT.

### CHARACTERISTICS

- Fine finish single-coat
- Scraped, float or rustic finish
- Waterproof at 10mm thickness

### PACKAGING:

30 kg bag.  
Disposable wrapped  
palette of 40 bags

## Lanko Ceramic Coating



### USE

Cement mortar, concrete, PC slab wooden, metal and various other surfaces are suitable for Parex Ceramic coating application so long as the surface is leveled, free from dust and applicators follow our substrate preparation guidance. If you have any doubt, please contact our technical department.

### CHARACTERISTICS

- Outstanding texture granite
- Easy and fast application
- Time resistant
- Economical (Low consumption)

### PACKAGING:

25KG Drum

## Lanko PCK



### USE

Cement mortar, concrete, PC slab wooden, metal and various other surfaces are suitable for Parex PCK application so long as the surface is leveled, free from dust and applicators follow our substrate preparation guidance. If you have any doubt, please contact our technical department

### CHARACTERISTICS

- Outstanding texture granite
- Easy and fast application
- Time resistant
- Excellent abrasion resistance

### PACKAGING:

27KG Drum

## Lanko Magic Grantie



### USE

Cement mortar, concrete, PC slab wooden, metal and various other surfaces are suitable for Parex PCK application so long as the surface is leveled, free from dust and applicators follow our substrate preparation guidance. If you have any doubt, please contact our technical department.

### CHARACTERISTICS

- Outstanding texture granite
- Easy and fast application
- Time resistant
- Excellent abrasion resistance

**PACKAGING:**  
27KG Drum

## Lanko Stony Coating



### USE

Cement mortar, concrete, PC slab wooden, metal and various other surfaces are suitable for Parex PCK application so long as the surface is leveled, free from dust and applicators follow our substrate preparation guidance. If you have any doubt, please contact our technical department.

### CHARACTERISTICS

- Outstanding texture granite
- Easy and fast application
- Time resistant

**PACKAGING:**  
27KG Drum

## Parexal



### USE

- Permissible substrates
  - Old masonry, e.g. quarry stone, brick, natural stone (including soft stone assembled with weak mortar) compliant with DTU 26.1
  - Earth-based constructions: e.g. pisé, adobe, rammed earth, cob, witchet, clinker
  - Masonry with plaster or lime mortar pre-treated with GOBETIS SPECIAL A
  - Masonry coated with traditional render/mortar compliant with DTU 26.1
  - New masonry: concrete, concrete blocks, Rt3 and Rt2 bricks
  - PARINTER RENOVATION
  - Concrete
- Permissible substrates
  - Plaster/Gypsum based substrates
  - Water-resistant substrates
  - Pure hydrated lime coatings
  - Paint and thick acrylic coatings
  - Inclined or horizontal substrates
  - Cellular concrete

### CHARACTERISTICS

- Substrate-friendly restoration render
- Low elasticity modulus
- High lime content
- Suitable for large thickness
- Application: 10 mm to 5 cm
- Compressive strength: CS I
- Water absorption: W2
- Reaction to fire: A1
- Apparent density: 1 400 kg/m<sup>3</sup>
- Modulus of elasticity: ≤ 2 700 MPa
- Tensile strength (average at 28 days): 1 MPa
- Water retention: 96%
- High water vapour permeance:
- Above 0.8 g/m<sup>2</sup>.h.mm.Hg
- Water vapour permeability\*: μ 10 approx.
- Sd value: 0.10 m approx. (for 10 mm thickness)

**PACKAGING:**  
30KG bag  
Pallet containing  
40 Bags (1200 KG)



# REFURBISHMENT SOLUTIONS





## Sika AnchorFix®- 1N



### USE

Sika AnchorFix®-1 N may only be used by experienced professionals. As a fast curing anchoring adhesive for all grades of:

- Rebars / reinforcing steel
- Threaded rods
- Bolts and special fastening systems

In the following substrates:

- Hollow and solid masonry
- Hard natural stone\*
- Solid rock\*

\* These substrates may vary greatly, in particular with regard to strength, composition and porosity. Therefore, for each application the suitability of Sika AnchorFix®-1 N

Adhesive must be tested by first applying Sika AnchorFix®-1 N Adhesive only to a sample area. Check in particular bond strength, surface staining and discoloration

### CHARACTERISTICS

- Fast curing
- Standard guns can be used
- Can be used at low temperatures
- ETA to ETAG 029 for anchoring in masonry
- Non-sag, even overhead
- Styrene-free
- Low odour
- Low wastage

### PACKAGING:

300 ml standard cartridge 12 cartridges per box  
pallet: 84 boxes

## SikaTop® Armatec®-110 EpoCem®



### USE

- Suitable for control of anodic areas (Principle 11, method 11.1 EN 1504-9)
- Suitable in concrete repair as corrosion protection for reinforcement.
- Suitable as a bonding primer on concrete and mortar

### CHARACTERISTICS

- Contains EpoCem® technology - improved bonding agent
- Extended open times for repair mortars
- Compatible with most Sika® repair mortars
- Excellent adhesion to concrete and steel
- Contains corrosion inhibitor
- Certified for application under dynamic load conditions
- Good resistance to water and chloride penetration
- High shear strength
- Long pot life
- Easy to mix
- Can be brushed on or applied using spray gun

### PACKAGING:

20 kg: A (1,14 kg) + B (2,86 kg) + C (16 kg)

## Sika AnchorFix®-2+ Tropical



### USE

Sika AnchorFix®-2+ Tropical may only be used by experienced professionals.

As a fast curing anchoring adhesive for all grades of:

- Rebars / reinforcing steel
- Threaded rods
- Bolts and special fastening systems
- Concrete
- Solid masonry
- Steel

Prior to any application, the suitability of the Sika AnchorFix® Adhesive for the substrate in terms of the desired bond strength, and for the prevention of surface staining or discolouration, must be confirmed by testing in a sample area. This is due to the wide variation of possible substrates, particularly in terms of strength, composition and porosity:

- Hard natural stone
- Solid rock

### CHARACTERISTICS

- Fast curing
- Standard guns can be used
- Medium to high load capacity
- ETA Approval available
- Suitable for cracked concrete
- Drinking Water certified
- LEED Attestation available
- Non-sag, even overhead
- Styrene-free
- Low odour
- Low wastage

### PACKAGING:

300 mL standard cartridge 12 per box  
Pallet: 75 boxes  
Component A Grey  
Component B Off-white  
Component A + B mixed Light grey



## Sika Anchorfix®-3001



### USE

Sika AnchorFix®-3001 may only be used by experienced professionals.

For the fixing of non-expanding anchors in the following:

Structural work:

- Rebar / steel reinforcement anchoring in new and refurbishment works
- Threaded rods
- Bolts and special fastening / fixing systems
- Metalwork, carpentry:
- Fixing of handrails, balustrades and supports
- Fixing of railings
- Fixing of window and door frames

In the following substrates:

- Concrete (cracked and un-cracked)
- Hollow and solid masonry
- Wood
- Hard natural and reconstituted stone\*
- Solid rock\*

\* These substrates may vary greatly, in particular with regard to strength, composition and porosity. Therefore, for each application the suitability of Sika AnchorFix®-3001 Adhesive must be tested by first applying the Product only to a sample area. Check in particular bond strength, surface staining and discoloration.

### CHARACTERISTICS

- Long Open Time
- Can be used in damp concrete
- High load capacity
- ETA to ETAG 001 for anchoring in cracked concrete
- ETA to ETAG 001 for rebar connections
- ESR to AC308 by ICC-ES, anchoring in cracked concrete for static, wind and earthquake loading
- ERto AC308 by IAPMO UES, anchoring in cracked concrete for static, wind and earthquake loading
- Drinking Water certified
- LEED Attestation available
- Fire resistance test report available
- Seismic testing available
- Styrene-free
- Excellent adhesion to the substrate
- Shrinkage-free hardening
- Standard guns can be used (with the 250ml cartridge)
- Low odour
- Low wastage

### PACKAGING:

250 ml standard cartridge 12 cartridges per box  
pallet: 75 boxes

400 ml side by side cartridge 12 cartridges per box  
pallet: 60 boxes

600 ml side by side cartridge 12 cartridges per box  
pallet: 36 boxes

## Sikadur®-32 Normal



### USE

As a structural bonding agent and adhesive for:

- Concrete elements (including bonding fresh to hardened concrete)
- Hard natural stone
- Ceramics, fibre-cement
- Mortar, Bricks, Masonry
- Steel, Iron, Aluminum
- Wood
- Polyester / fiberglass and Epoxy resin materials
- Glass

### CHARACTERISTICS

Sikadur®-32 Normal has the following advantages:

- Easy to mix and apply
- Suitable for dry and damp concrete surfaces
- Very good adhesion to most construction materials
- High Bond Strength
- Hardens without shrinkage
- Different coloured components (for mixing control)
- No primer needed
- High initial and ultimate mechanical strength
- Impermeable to liquids and water vapour
- Good chemical resistance

### PACKAGING:

5 kg (A+B)  
Pre-batched unit

## SikaLatex®-100 P QA



### USE

SikaLatex-100 P QA is used as bonding agent and site- mix mortar admixture for the following applications:

- Thin layer patching mortars
- Renders
- Floor screeds
- Concrete repair mortars
- Abrasion resistant linings
- Tile fixing mortars
- Masonry mortars
- Bonding slurry for fresh to old concrete

### CHARACTERISTICS

- SikaLatex-100 P QA is simply added to the mixing water to improve the following properties:
- Adhesion
- Shrinkage
- Water resistance
- Abrasion resistance
- Chemical resistance

SikaLatex-100 P QA is non-corrosive, ready to use and does not re-emulsify, even under highly alkaline conditions.

### PACKAGING:

20 L pails,  
200 L drums  
White liquid

## SikagROUT®-214 QA



### USE

SikaGrout®-214 QA precision grout is used for grouting in the following:

- Machine Foundations
- Columns in pre-cast construction
- Base plates
- General concrete repairs
- Joint nosing
- Bridges bearing pads

### CHARACTERISTICS

SikaGrout®-214 QA is an easy to use grout requiring only the addition of water. It offers the following beneficial properties:

- Easy to mix
- Good flow characteristics
- Dual expansion system
- Adjustable consistency
- High early and final strengths
- Non-corrosive and iron-free

### PACKAGING:

25 kg bags  
Grey powder

## Lanko NSG



### USE

- Bedding of industrial equipment, rebars, anchor bolts.
- Assembling of precast panels, grip-filling.
- Bearing casting of heavy machinery, column, crane rails.
- Repairing of concrete structure.

### CHARACTERISTICS

- Non-shrink.
- Good workability.
- Easy application
- Excellent compressive strength

### PACKAGING:

25 kg bags  
Grey powder

## SikagROUT®-114 QA



### USE

SikaGrout®-114 QA is used for grouting in the following:

- Machine foundations
- Columns in pre-cast construction
- Concrete anchors, cavities, gaps and recesses
- Base plates
- General concrete repairs
- Bridge bearings pads

### CHARACTERISTICS

SikaGrout®-114 QA is an economical and easy to use grout requiring only the addition of water. It offers the following beneficial properties:

- Easy to mix
- Good flow characteristics
- Dual expansion system
- Adjustable consistency
- High final strengths
- Non-corrosive and iron-free

### PACKAGING:

25 kg bags  
Grey powder

## Sikadur®-42 MP Slow QA



### USE

Sikadur®-42 MP Slow QA may only be used by experienced professionals. High-strength grouting and fixing of:

- Starter bars
- Anchors
- Fasteners
- Tie rods
- Crash barrier posts
- Fence and railing posts

Under-grouting and bedding of:

- Base plates
- Machine bases, seat base-plates for light and heavy machinery including heavy impact and vibratory machinery, reciprocating engines, compressors, pumps, presses, etc.
- Bridge bearings
- Mechanical joints (i.e. road/bridge/deck types etc.)

Sleeper-less, direct rail fixing:

- Crane tracks
- Light rail and permanent way in tunnels
- Light rail and permanent way over bridges

### CHARACTERISTICS

- High early strength
- Ready-to-mix, pre-batched units
- Moisture tolerant
- Non-shrink
- Corrosion and chemically resistant
- Stress and impact resistant
- High compressive strength
- High vibration resistance
- Low coefficient of thermal expansion

### PACKAGING:

12 kg (A+B+C)  
30 kg (A+B+C)  
Pre-batched unit for each

Concrete Grey

## Sika Monotop®-612 QA



### USE

Sika MonoTop®-612 QA is used for structural repair work and suitable for:

- Restoration works, repair of spalling and damaged concrete in buildings, bridges, infrastructure and superstructure works
- Structural strengthening by increasing the bearing capacity of the concrete structure by adding mortar (section enlargement)
- Preserving or restoring passivity by increasing cover with additional mortar and replacing contaminated or carbonated concrete

### CHARACTERISTICS

Sika MonoTop®-612 QA provides the following beneficial properties:

- Structural repair
- Rapid strength gain and high final strength
- Good water and oil resistance
- Low shrinkage behavior
- High abrasion resistance
- Good adhesion
- Easy to apply
- Application up to 60 mm in 1 layer
- Low permeability

### PACKAGING:

25 kg bags  
Grey powder

## Sika Monotop®-625 Fine QA



### USE

- Pore sealer / finishing coat on cementitious substrates
- Thin layer render coat on horizontal and vertical areas in building and civil engineering construction, for external and internal finishing etc.
- Levelling mortar on uneven substrates, and profiled concrete surfaces.
- Fine repair mortar to fill honeycombs, pores etc.
- Repair mortar for repair of small defects on edges and joint sides; to form and finish joints and covings

### CHARACTERISTICS

- Easy to use; mix with water only
- User friendly application; excellent workability
- Good mechanical strengths
- Sprayable by the wet-spray method
- Non-corrosive, non-toxic
- Adjustable consistency
- High bond strength

### PACKAGING:

20 kg bags  
Grey powder

## Lanko Skimcoat 113



### USE

Interior and exterior walls and ceilings.

- Reinforced concrete.
- Precast concrete panels.
- Traditional rendering

### CHARACTERISTICS

- Application thickness : 0.5-10 mm.
- Adjustable consistency.
- Good trowelability on application.
- No primer required.
- Compatible with decorative
- VOC - none (<10µg/lit)

### PACKAGING:

25 kg bags

## Lanko 731



### USE

- Repair of concrete surfaces: spalling, honeycombing, stair nosing, ramp, etc.
- Concrete restructuring: pillars, slabs, posts, dam aprons and spillways, etc.
- Reinforcement of weakened structures: balconies, overhangs, cornices.
- Treatment of chamfers and seams prior to waterproofing.

### CHARACTERISTICS

- Application thickness: 5-50 mm.
- Thixotropic.
- Strong bonding.
- High initial and final mechanical strength.
- Excellent resistance to sea water and sulphated waters.
- Contact possible with drinking water.
- VOC - none (<10µg/lit)

### PACKAGING:

25 kg bags

## Lanko Skim 110



### USE

Interior and exterior walls and ceilings.

- Reinforced concrete.
- Precast concrete panels.
- Traditional rendering

### CHARACTERISTICS

- For interior and exterior walls and ceilings.
- Easy to use.
- Perfectly smooth finish.
- Adjustable consistency.
- Good trowelability on application.
- No primer required.
- Compatible with decorative wall-coverings.
- Application thickness: 0.5 to 3 mm

### PACKAGING:

20 kg bag



## Sikacrete®-113 PP QA



### USE

- Sikacrete -113 PP QA used for the structural repair of deteriorated concrete.
- It is ideal for casting sections or members where the volumes required are too large for conventional grouts, and too small and inaccessible for normal concreting applications.
- A typical application is the re-profiling of damaged concrete members and reprofiling of pile tops using formwork for both pouring and pumping techniques.

### CHARACTERISTICS

- One component, requires the addition of water only
- Reduced waste and risk of mixing failures
- Easy to mix, apply and finish
- Economical Excellent adhesion Shrinkage compensated Rapid strength development
- Compatible with the properties of typical concrete
- Vapour permeable High resistance to freeze/thaw cycling
- Excellent flowability

### PACKAGING:

25 kg bags  
Grey powder

## Sikacrete®-114 QA



### USE

Sikacrete®-114 QA is used for the structural repair of deteriorated concrete. It is ideal for casting sections or members where the volumes required are too large for conventional grouts, and too small and inaccessible for normal concreting applications.

A typical application is the re-profiling of damaged concrete members, using formwork.

### CHARACTERISTICS

- One component, requires the addition of water only
- Reduced waste and risk of mixing failures
- Easy to mix, apply and finish
- Economical
- Excellent adhesion
- Shrinkage compensated
- Rapid strength development
- Compatible with the properties of typical concrete
- Vapour permeable

### PACKAGING:

25 and 40 kg bags  
Grey powder

## Sikadur®-31 CF Slow/Normal



### USE

Sikadur®-31 CF Slow/Normal may only be used by experienced professionals. As a structural adhesive and mortar for:

- Concrete elements
- Hard natural stone
- Ceramics, fiber cement
- Mortar, Bricks, Masonry
- Steel, Iron, Aluminum
- Wood
- Polyester, Epoxy
- Glass

As a repair mortar and adhesive:

- Corners and edges
- Holes and void filling
- Vertical and overhead use

Joint filling and crack sealing:

- Joint and crack arris / edge repair

### CHARACTERISTICS

- Easy to mix and apply
- Very good adhesion to most construction materials
- High strength adhesive
- Thixotropic: non-sag in vertical and overhead applications
- Hardens without shrinkage
- Different coloured components (for mixing control)
- No primer needed
- High initial and ultimate mechanical strength
- Good abrasion resistance
- Impermeable to liquids and water vapour
- Good chemical resistance

### PACKAGING:

1 kg and 5 kg units (A+B)  
Normal:  
6 kg (A+B) Pre-batched unit  
Pallets 480Kg (80X6)  
1.2 kg (A+B) Pre-batched unit  
box of 6 x 1.2 kg

## Sikagard®-700 S QA



### USE

- Sikagard®-700 S QA is used as a water repellent and colourless protective surface treatment absorbent exposed materials such as concrete, Cementitious rendering, concrete tiles, fibre cement, brickwork (clay and lime sand, non-vitrified), natural stone etc.
- Sikagard®-700 S QA can also be used as hydrophobic primer under solvent based or emulsion based protective coatings.
- Sikagard®-700 S QA is used as water-repellent impregnation (hydrophobic treatment) for absorbent substrates such as concrete in civil engineering or building concrete structures.
- Suitable for protection against ingress (Principle 1, method 1.1 of EN 1504-9)
- Suitable for moisture control (Principle 2, method 2.1 of EN 1504-9)
- Suitable for increasing the resistivity (Principle 8, method 8.1 of EN 1504-9)

### CHARACTERISTICS

- Reduction of capillary water absorption
- Reduces efflorescence
- Reduces dirt penetration into the pores
- Improves thermal insulation
- Can be over coated with solvent based and dispersion coatings
- Higher durability and resistance than conventional silicone based treatments
- Does not usually change the appearance of the substrate
- Does not act as a vapour barrier

### PACKAGING:

20 L cans

## Sikagard®-705 L



### USE

- Sikagard®-705 L is used as water-repellent impregnation (hydrophobic treatment) for absorbent substrates such as concrete in civil engineering or building concrete structures subjected to heavy stress due to freeze and thaw cycles and de-icing salts and chloride attack in marine environment
- Suitable for protection against ingress (Principle 1, method 1.1 of EN 1504-9),
- Suitable for moisture control (Principle 2, method 2.1 of EN 1504-9)
- Suitable for increasing the resistivity (Principle 8, method 8.1 of EN 1504-9)

### CHARACTERISTICS

- Excellent penetration
- Fast uptake even on dense concrete
- Economic and easy to use
- Reduces capillary water absorption, protection against driving rain and splashing on vertical areas
- Reduction of absorption of aggressive or deleterious agents dissolved in water (i.e. de-icing salts or chloride from marine environment)
- No change in water vapour permeability
- Long term efficiency, deep penetration
- Increases the resistance of concrete to freeze and thaw cycles and de-icing salts
- Reduce corrosion even in cracked concrete
- Retard corrosion initiation by reducing the available humidity at reinforcement bars level
- Mitigate corrosion by preventing further chloride to migrate to reinforcement bars
- Comply with Dutch guidelines (RWS NEN-EN 1504-2) on CEM III. Resistant to sea water. Low VOC content.
- Ready to use

### PACKAGING:

25 L Pail  
200 L Drum

## Sikagard®-720 Epocem



### USE

- As a levelling layer over concrete and mortars in 0.5 - 3 mm on vertical or horizontal surfaces.
- Application in new works or damaged concrete, in aggressive chemical environments
- Application over high moisture content substrates, even green concrete
- As a Temporary Moisture Barrier (TMB) (min. 2 mm thick) allowing the application of Epoxy, Polyurethane and PMMA\* resin coatings requiring dry substrates, for a lasting solution.
- As a pore sealer for the reprofiling, smoothing and levelling of concrete surfaces
- Suitable for moisture control (Principle 2, method 2.3 of EN 1504-9)
- Suitable for restoration work (Principle 3, method 3.1 and 3.3 of EN 1504-9).
- Suitable for physical resistance (Principle 5, method 5.1 of EN 1504-9)
- Suitable for preserving or restoring passivity (Principle 7, method 7.1 and 7.2 of EN 1504-9)
- Suitable for increasing resistivity (Principle 8, method 8.3 of EN 1504-9).

### CHARACTERISTICS

- Better chemical resistance than a PCC mortar
- Excellent protection of concrete in aggressive environments
- CE certified in accordance with EN 1504 parts 2 and 3
- Impervious to liquids but permeable to water vapour
- Excellent bond to green or hardened concrete whether damp or dry
- Fast overcoating of Sika® resin based finish products
- Ideal preparation for smooth surface finishes
- For internal or external use
- Contains no solvents
- Can be applied by hand or mechanically

### PACKAGING:

Pre-dosed 21 kg sets.  
Part A: 1.14 kg plastic container  
Part B: 2.86 kg plastic container  
Part C: 17.0 kg plastic or aluminium lined double paper bags

## Sika Intraplast® CFG



### USE

Sika® Intraplast CFG is used to increase the cohesion in cementitious grouts (addition of sand is possible). Sika® Intraplast CFG can be used for grouting of:

- Post tensioning cables
- Pre-stressed cable ducts
- Rock and concrete anchor bolts

### CHARACTERISTICS

- Improved flow
- Increased cohesion
- Nitrogen gas system
- Volume expansion in wet state
- Slight retardation to extend open time

**PACKAGING:**  
5 and 10 kg bags

## Sika Anchorfix® -3030



### USE

- Sika AnchorFix®-3030 may only be used by experienced professionals.
- Anchoring adhesive for fixing of non-expanding anchors in the following:

Structural work

- Rebar / steel reinforcement anchoring in new and refurbishment works

- Threaded rods
  - Bolts and special fastening / fixing systems
- Metalwork, carpentry
- Handrails, balustrades and supports
  - Railings, Window and door frames

Substrates

- Concrete (cracked and un-cracked)
- Hollow and solid masonry
- Wood. Natural and reconstituted stone
- Solid rock

### CHARACTERISTICS

- Long open Time
- Can be used in damp concrete
- High load capacity
- ETA for anchoring in cracked concrete
- ETA for post installed rebar connections
- Seismic tested (C1 & C2)
- Suitable for contact with drinking water
- Fire resistant
- Styrene-free
- Good adhesion to substrate
- Shrinkage-free hardening
- Standard sealant guns can be used (300ml cartridge)
- Low emissions
- Low wastage

**PACKAGING:**  
Standard Cartridge  
(300ml x 12)/Box  
(75 box x 900 Cart.)/  
Pallet  
Dual Cartridge  
(385ml x 12)/Box  
(70 box x 840 Cart.)/  
Pallet  
(585ml x 12)/Box  
(56 box x 672 Cart.)/  
Pallet

## Lanko 101



### USE

- Interior and exterior walls and ceilings as cement mix: 0.3-4 mm.
- Interior walls and ceilings as gypsum mix: 0.3-50 mm.

Interior/Exterior

- Old and new concrete.
- Reinforced concrete.
- Precast concrete panels.
- Traditional rendering.

Interior only

- Lightweight concrete or lightweight block.
- Gypsum board (in gypsum mix).

### CHARACTERISTICS

- For interior and exterior walls and ceilings.
- Application thickness: 0.3-4 mm.
- Takes the color of the hydraulic binder after mixing.
- Adjustable consistency.
- Excellent trowelability on application.
- Perfectly smooth finish.
- Compatible with decorative wallcoverings.

**PACKAGING:**  
25 KG Bucket

## Lanko CG 60



### USE

All necessary preparatory work must be completed before the grout is mixed. The fluid nature of the grout at 35% maximum water to powder ratio enables it to flow long distances in well prepared elements. Sufficient head should always be provided by positive pump pressure to ensure grout flow along or upwards in the cable ducts. Site trials may be carried out to confirm that suitable equipment is available, and an appropriate water / powder ratio is chosen. A surcharge standpipe should be allowed for to take up 'sinkage' as the grout fills voids. Ensure that enough grout is mixed and available for the grouting operation to be completed in one continuous pour.

### CHARACTERISTICS

- High fluidity
- High early compressive strength
- No shrinkage
- No bleeding
- Quick and easy mixing

**PACKAGING:**  
20kg valve sack bags

## Sika® FerroGard®-903



### USE

Sika® FerroGard®-903 is recommended for all steel-reinforced, prestressed, precast, post tensioned or marine concrete.

- Steel-reinforced concrete, bridges and highways exposed to corrosive environments (deicing salts, weathering)
- Building facades and balconies
- Steel-reinforced concrete in or near a marine environment
- Parking garages
- Piers, piles, and concrete dock structures
- As part of Sika's system approach for buildings and civil engineering structures

### CHARACTERISTICS

Sika® FerroGard®-903 offers owners, specifiers, port authorities, DOTs, and engineers, a new technology in corrosion inhibition that can easily be applied to the surface of existing concrete to extend the service life of any reinforced concrete structure.

- Protects against the harmful effects of corrosion by penetrating the surface of even the most dense concrete and diffusing to the steel to inhibit corrosion.
- Enhances the durability of reinforced concrete.
- Does not require concrete removal.
- Environmentally sound.
- Easily applied by either spray or roller to all existing reinforced concrete.
- Can be applied to reinforced concrete that already exhibits corrosion.
- Adds additional benefits when used prior to protective coatings in concrete restoration systems.
- Water based for easy handling and application.
- Not a vapor barrier; allows vapor diffusion.
- FerroGard® has been proven effective in both laboratory (ASTM C109/Cracked Beams) and field analysis.
- ANSI/NSF Standard 61 potable water approved

### PACKAGING:

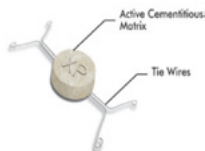
5-gallon pails with spout  
55-gallon Drums  
Color: Pale Yellow

## Sika® Galvashield® XP Sika® Galvashield® XPT Sika® Galvashield® XP2 Sika® Galvashield® XP4



### USE

- Patch repairs
- Joints between new and existing concrete
- Slab replacement
- Expansion joint repair
- Repair of epoxy-coated rebar
- XPT/XP2/XP4 anodes for chloride contaminated concrete
- XP Compact anode for carbonated concrete
- Mitigates ring anode formation (halo effect) in concrete repairs



### CHARACTERISTICS

- Proven technology - supported by independent test program.
  - Focused protection - provides localized corrosion protection where it is needed the most, at the interface of the repair and the remaining contaminated concrete.
  - Economical - low cost method of providing galvanic corrosion prevention to extend the initiation of reinforcement corrosion around patch repairs.
  - Versatile - effective in chloride-contaminated and carbonated concrete containing chlorides. Can be used for both conventionally reinforced and prestressed or post-tensioned concrete.
  - One-and-Done connection - Innovative single wire connection can be installed up to 2 x faster than the traditional two wire connection.
  - Low maintenance - requires no external power source or system monitoring.
  - CSP-3 Surface profile - Raised ridges provide increased surface profile to promote mechanical bond with repair mortars & concrete.
  - Measurable - anode performance can be easily monitored if required.
  - Does not cause hydrogen embrittlement.
  - Long lasting - 10 to 20 year service life\* reduces the need for future repairs.
  - Full System - can be used in conjunction with Sika® FerroGard® and Sikagard® technology to offer a full corrosion management system.
- \* As with all galvanic protection systems, service life is dependent upon a number of factors including reinforcing steel density, concrete conductivity, chloride concentration, humidity and anode spacing

### PACKAGING:

Sika® Galvashield® XP  
50 units/box  
- 6.8kg box  
Sika® Galvashield® XPT  
50 units/box - 9.1kg box  
Sika® Galvashield® XP2  
40 units/box  
-10.2kg box  
Sika® Galvashield® XP4  
30 units/box - 12kg box

## Sika® Galvashield® Embedding Mortar



### USE

- Embedding Sika® Galvashield® anodes in vertical and horizontal situations
- To fill grooves which contain anode wires

### CHARACTERISTICS

- Easy to use, just add water
- Controlled resistivity mortar
- Portland cement based
- High pH mortar with reservoir of alkali to resist acid generation at the anode

### PACKAGING:

20 Kg Bag  
Color: Grey Powder

## Sika® Galvashield® CC



### USE

- Reinforced concrete with high chloride content
- Post-tensioning anchors
- Columns and beams
- Car Parks and Bridge Decks
- Piers & Marine structures
- Pre-stressed concrete elements
- Carbonated Concrete

### CHARACTERISTICS

- Proven technology - supported by independent test program.
- Focused protection - provides localized protection where actual and potential corrosion risks are high.
- Economical - low cost method protecting local areas that are chloride contaminated but sound, thereby reducing concrete breakout.
- Versatile - effective in chloride-contaminated and carbonated concrete. Can be used for both conventionally reinforced and prestressed or post-tensioned concrete.
- User friendly - installation is quick and easy.
- Low maintenance - requires no external power source or system monitoring.
- Measurable - anode performance can be easily monitored if required.
- Long lasting - 10 to 20 year service life\* reduces the need for future repairs.
- Full system - can be used in conjunction with Sika FerroGard and SikaGard technology to offer a full corrosion management system.  
\* As with all galvanic protection systems, service life is dependent upon a number of factors including reinforcing steel density, concrete conductivity, chloride concentration, humidity and anode spacing.

### PACKAGING:

Galvashield CC Anodes  
20 anodes per box

## Sika® Galvashield® T2



### USE

- Multi-story Carparks
- Bridge Decks, Columns & Beams
- Marine Piers and Wharfs
- Balconies

### CHARACTERISTICS

- Proven Technology - ICCP electrochemical treatment and alkali-activated galvanic anode technologies fused together into a single unit.
- Simple Installation - Sika® Galvashield T2 is a single unit hybrid system with no external power requirements.
- Fit & Forget - Sika® Galvashield T2 operates automatically once installed, reducing access requirements and therefore time and cost.
- Long Lasting - Provides corrosion protection for up to 30+ years without the need for maintenance.\* Phase 1 can be designed to be repeated at any time if desired.
- Measurable Performance - While not critical for the long term operation of the system, the site performance can be measured and validated if required.

### PACKAGING:

20 units per box



## Sika® Galvanode® DAS



### USE

- Bridges, piers and wharves
- Power and industrial plant rehabilitation
- Concrete jacketing/section enlargement
- Galvanic jackets for columns
- Galvanic deck overlays
- Service life extension in severe service conditions
- Conventionally reinforced and pre-stressed/post-tensioned concrete

### CHARACTERISTICS

- Proven technology - supported by independent test program
- High capacity - can provide more zinc and more current output than other galvanic anode systems
- Design flexibility - anode design and spacing can be customized to meet project performance requirements and service life objectives
- Versatile - can be used for both conventionally reinforced and prestressed or post-tensioned concrete
- User friendly - installation is quick and easy, requiring no specialized equipment
- Low maintenance - requires no external power source or system monitoring
- Measurable - system performance can be easily monitored if required
- Embedded system - provides more uniform performance, eliminates risk of vandalism

### PACKAGING:

Custom-packaged based on project requirements

## Sikagard®-790



### USE

Sikagard®-790 All-in-One Protect can be used to protect facades, floors and roofs made from all common mineral-based building materials, such as:

- Natural stone such as granite, limestone, marble, etc., as well as reconstituted or artificial stone
- Clay/cement-based terracotta tiles, roof tiles
- Concrete, cement bound occupation and gippleister etc

### CHARACTERISTICS

- Protection against penetration of water and oil
- Provides protection against staining
- Suitable for use on all types of facades, floors and roofs
- Suitable for use on most building materials
- Provides invisible protection - no change in aspect
- The surface can still breathe
- UV light resistant
- Reduces the problem of graffiti because it is easier to remove
- Environmentally friendly - low VOCs

### PACKAGING:

5 and 20-litre canisters  
Color: Light yellowish liquid

## Lanko 238 Hydroresist



### USE

- Concrete, concrete deactivated
- Mortars, hydraulic façade coatings
- Sandstone
- Bricks, tiles, terracotta tiles
- Natural and synthetic stones, reconstructed stones (a pre-test is essential)
- Slabs, cobblestones
- Seals of stones, bricks, tiles.

### CHARACTERISTICS

- Appearance: milky white liquid.
- Density: 1, pH: 8.
- Not suitable for exposure to strong chemical stresses.
- Drying time: 30 min to 1 hour at 20°C depending on the porosity of the support.
- Hair absorption:  $W < 0.1 \text{ kg/m}^2 \cdot \text{min} 0,5$ .
- Re-commissioning time: 24 hours minimum.
- Produced in water phase.
- Protects from water and dirt.
- Limits the formation & proliferation of pollution (greening, algae, lichens, mould)
- Blocks/neutralizes atmospheric chemical attacks (efflorescences, dirt, acid rain).
- UV-resistant.
- Increases mechanical resistance of surface (natural erosion, crumbling, flaking...).
- Avoids degradations following freeze-thaw cycles.
- Allows the surface to retain thermal insulation properties.
- Extends the original aesthetic of the façade, since the water repellent facilitates maintenance.
- Easy application

### PACKAGING:

5 and 20-litre canisters

# SEALING & BONDING SOLUTIONS



## Sikasil® SG-18



### USE

Sikasil® SG-18 can be used as structural glazing adhesive and for other bonding applications where superior resistance to UV radiation, high temperatures and weathering is required.

This product is suitable for professional experienced users only. Test with original substrates and conditions have to be performed to ensure adhesion and material compatibility.

### CHARACTERISTICS

- Meets requirements of ASTM C 1184
- Outstanding UV and weathering resistance
- Bonds well to glass, metals and coated metals

### PACKAGING:

Cartridge 300ml  
Unipack 600ml  
Pail 26kg  
Black / Grey S6

## SikaHyflex® 305 EU



### USE

SikaHyflex®-305 EU is designed for weather proofing and sealing applications where durability under severe conditions is required. SikaHyflex®-305 EU is particularly suited for use as a weather sealant for curtain wall and metal cladding facades.

### CHARACTERISTICS

- Very good weathering resistance
- Movement capability of  $\pm 50$  % (ASTM C 719)
- Very good workability
- Good adhesion to a wide range of substrates
- Solvent-free
- Neutral cure

### PACKAGING:

300 mL cartridge, 25 cartridges per box  
600 mL foil pack, 20 foil packs per box

## Sikaflex® Construction+



### USE

Sikaflex® Construction+ is designed as a general-purpose sealant for sealing joints in building construction such as movement, expansion and construction/isolation joints around windows and doors, facades, claddings etc. in concrete, brick, wood, metal and PVC sections and structures etc.

### CHARACTERISTICS

- Very good resistance to weathering
- Movement capability of  $\pm 35$  (ASTM C 719)
- Over paintable
- Bubble-free curing
- Good workability
- Good adhesion to many substrates
- Solvent-free
- Very low emissions

### PACKAGING:

600 mL foil pack, 20 foil packs per box  
Concrete Grey /White/ Beige

## Sikaflex® -11 FC+



### USE

Sikaflex®-11 FC+ is designed as a multipurpose adhesive for indoor and outdoor bonding of window sills, thresholds, stair steps, skirting boards, base boards, crash protection boards, covering boards and prefabricated elements. Sikaflex®-11 FC+ is also suitable for soundproofing of pipes between concrete and sheathing, caulking between partitions, seam sealing, sealing in metal and wood construction and for ventilation construction.

### CHARACTERISTICS

- Silicone-free
- Very good adhesion to most construction materials
- Over paintable
- No need to grout the bonded areas
- Good mechanical resistance
- Good resistance to weathering
- Impact and vibration absorbing
- Very low emissions

### PACKAGING:

600 mL foil pack, 20 foil packs per box  
Concrete Grey, White and Black

## Sikaflex® Pro-3



### USE

Sikaflex® PRO-3 is designed for movement and connection joints in floors, pedestrian and traffic areas (example: parking decks, car parks), warehouses and production areas, applications in the food industry, sewage treatment plants, tunnel construction and in clean rooms. It can be used for vertical and overhead joints.

### CHARACTERISTICS

- Movement capability of  $\pm 35$  % (ASTM C 719)
- Very high mechanical and chemical resistance
- Bubble-free curing
- Good adhesion to most construction materials
- Jet fuel and diesel resistance
- Solvent-free
- Very low emissions

### PACKAGING:

600 mL foil pack, 20 foil packs per box  
Concrete Grey



## Sikaflex® PRO-3 SL



### USE

Sikaflex® PRO-3 SL is designed for horizontal applications in movement and connection joints in floors, pedestrian and traffic areas (example: parking decks, car parks), warehouses and production areas, applications in the food industry, ceramic tiles such as in public buildings etc. and floor joints in tunnel construction.

### CHARACTERISTICS

- Movement capability of  $\pm 35\%$  (ASTM C 719)
- Very high mechanical and chemical resistance
- Bubble-free curing
- Self-leveling
- Good adhesion to most construction materials
- Solvent-free
- Very low emissions

### PACKAGING:

600 mL foil pack, 20 foil packs per box  
Concrete Grey

## Sikaflex®-118 Extreme Grab



### USE

An adhesive to bond most construction components and materials such as:

- Concrete
- Masonry
- Most stones
- Ceramic
- Wood
- Metals
- Glass
- Mirrors

### CHARACTERISTICS

- Very high initial grab
- Fixing of heavy objects without temporary fixation
- Good workability
- Very low emissions
- Adhesive-sealant with CE marking

### PACKAGING:

290 ml cartridge, 12 cartridges per box

## Sikaflex®-111 Stick & Seal



### USE

An adhesive to bond most construction components and materials such as:

- Concrete
- Masonry
- Most stones
- Ceramic
- Wood
- Metal
- Glass
- Plastics such as PVC, PA, PET and EPS/XPS

A sealant to seal vertical and horizontal joints.

### CHARACTERISTICS

- Bonds well to a wide variety of substrates without surface pre-treatment
- Bonds to damp concrete
- Compatible with most substrates, EPS/XPS, building wraps and bitumen
- Good mechanical resistance and weathering resistance
- Adhesive-sealant with CE marking

### PACKAGING:

290 ml cartridge, 12 cartridges per box  
White  
Concrete grey  
Brown  
Black

## Sikaflex®-112 Crystal Clear



### USE

An adhesive to bond most construction components and materials such as:

- Concrete
- Masonry
- Most stones
- Ceramic
- Wood
- Metal
- Glass
- PVC

A sealant to seal around bonded components

### CHARACTERISTICS

- 100 % transparent
- Good initial grab
- Very low emissions
- Adhesive-sealant with CE marking

### PACKAGING:

290 ml cartridge, 12 cartridges per box



## SikaBond®-115 Strong Fix



### USE

Bonding of various indoor and sheltered outdoor construction components:

- Skirting boards
- Wooden frames
- Battens
- Mouldings
- Panels,
- Terracotta tiles
- Anodised aluminum,
- Hard PVC profiles
- Polystyrene mouldings and ceiling tiles.
- Bonding substrates:
- Concrete, mortar, fibre cement, wood and paint

### CHARACTERISTICS

- Easy to apply
- Easy to clean
- Rapid build-up of strength
- High final strength
- Wide adhesion range

### PACKAGING:

290 mL cartridge, 12 cartridges per box

## Sikasil® Universal



### USES

Sikasil® Universal is designed for glazing and weatherproofing applications on non-porous substrates such as glass or glazed ceramic tiles

### CHARACTERISTICS

- Low-modulus
- High elasticity and flexibility
- Very good resistance to shrinkage, cracking and discoloration
- Very good adhesion to a variety of non-porous substrates

### PACKAGING:

280 mL cartridges, 12 cartridges per box

## Sika Sanisil®



### USES

Sika® Sanisil® is designed for sanitary or other sealing applications where mildew resistance is required

### CHARACTERISTICS

- High elasticity and flexibility
- Long term fungus and mildew resistance
- Very good UV and weathering resistance

### PACKAGING:

300 mL cartridges, 12 cartridges per box

## Sika® Aktivator®-205



### USES

Sika® Aktivator-205 is used to improve adhesion on non-porous substrates such as metals, plastics, ceramic screen prints and painted surfaces.

Seek manufacturer's advice and perform tests on original substrates before using Sika® Aktivator-205 on materials prone to stress cracking.

This product is suitable for experienced professional users only. Tests with actual substrates and conditions have to be performed to ensure adhesion and material compatibility.

### CHARACTERISTICS

- Enhanced adhesion on various substrates
- Short flash-off time
- Easy to use
- Transparent

### PACKAGING:

Can 30ml  
Can 250ml  
Can 1000ml

## SikaPrimer®-3 N



### USE

Sika® Primer-3 N is designed for Sikaflex®, Sika-Hyflex®, SikaBond® and Sikasil® products used on porous substrates like concret, concrete precast, GRC, GRP and metals

### CHARACTERISTICS

- Easy to apply
- Water repellent
- Short flash-off time

### PACKAGING:

1 L bottle  
4 bottles per box

## SikaPrimer®-210



### USE

Sika® Primer-210 is used to improve adhesion on many metals such as aluminum, steel and non-ferrous metals. The primer might also be used to enhance the adhesion of Sikasil® sealants and adhesives.

Seek manufacturer's advice and perform tests on original substrates before using Sika® Primer-210 on materials prone to stress cracking. This product is suitable for experienced professional users only. Tests with actual substrates and conditions have to be performed to ensure adhesion and material compatibility.

### PACKAGING:

Can 250ml  
Can 1000ml  
Colorless, slightly yellow

## Sikasil® WS-305 S



### USE

Sikasil® WS-305 S can be used for weatherproofing and sealing applications where durability under severe conditions is required. Sikasil® WS-305 S is particularly suited as a weather seal for curtain walling and windows. This product is suitable for professional experienced users only. Tests with actual substrates and conditions have to be performed to ensure adhesion and material compatibility.

### CHARACTERISTICS

- Complies with ASTM C 920 Type S, Class 35, Use M, G and A
- Meets requirements of GB/T14683-2017
- Outstanding UV and weathering resistance
- Adheres well to many substrates including glass, mortars, metals, coated and painted metals, plastics and wood

### PACKAGING:

Cartridge 300ml  
Unipack 600ml  
  
Black, White, Grey S1  
Grey S3, Grey S4, Grey S6, Ivory, Beige, Bronze

## Sikacryl®-621 Fire



### USE

- Restores the fire resistance performance of a floor or wall which incorporates penetration services or linear seals
- Can be combined with SikaSeal®-623 Fire, Sikacryl®-624 Fire, SikaSeal®-626 Fire Board, SikaSeal®-627 Fire Collar, SikaSeal®-628 Fire Wrap and SikaSeal®-629 Fire Wrap

### CHARACTERISTICS

- Can be combined with many other Sika passive fire protection products
- Provides acoustic insulation
- 1-part ready to use, easy to apply
- Up to 4 hours fire resistance

### PACKAGING:

300 ml cartridge, 12 cartridges per box  
600 ml foil pack, 12 foil packs per box  
White and grey

## Sikacryl®-110



### USE

- Sikacryl®-110 is designed for interior crack and joint filling with low movement. Sikacryl®-110 is also suitable for duct sealing in HVAC applications.
- Suitable for use in hot and tropical climatic conditions.

### CHARACTERISTICS

- Good application properties
- Movement capability of  $\pm 7.5\%$
- Mildew and fungus resistant
- Over-paintable
- Good adhesion on various substrates
- For interior use

### PACKAGING:

280 ml cartridge, 12 cartridges per box  
White and grey

## Sikaflex®-428 Precast



### USE

Sikaflex®-428 Precast is designed for movement and connection joints between concrete precast elements, GRC and GRP parts. It is also suitable for masonry, concrete and block work joints, roof joints and terminations.

### CHARACTERISTICS

- Good resistance to weathering
- Movement capability of  $\pm 25\%$  (ASTMC719)
- Over paintable
- Good adhesion to concrete
- Good application properties
- Low VOC content

### PACKAGING:

600 mL foil pack, 20 foil packs per box  
White, Off-white, Concrete grey and Beige





# CONCRETE SOLUTIONS

## Sika® Separol®-300 QA



### USE

Sika® Separol-300 QA is suitable for use on all types of formwork materials such as:

- Steel
- Plywood
- Timber
- Textured rubber modules

### CHARACTERISTICS

Sika® Separol® QA has the following characteristics:

- Allows clean, easy striking
- Extends the life of formwork
- Improved finish for concrete
- Reduces concrete contamination
- Economical to use
- Reduces blow hole formation

### PACKAGING:

20 L and 200 L drums

## Sika® Separol® FP-15



### USE

- Steel shuttering
- Plywood shutters
- High density plastic shutters

### CHARACTERISTICS

- Allows clean, easy striking
- Extends the life of formwork
- Improved finish for fair faced concrete
- Reduces concrete contamination
- Economical to use
- Reduces blow hole formation

### PACKAGING:

20 L and 200 L drums  
Light yellowish-brown liquid

## Sika® Antisol®-200 QA



### USE

Sika® Antisol®-200 QA can be applied on site and in precast plants. It has been specially developed for use as a high-quality curing and sealing compound for interior or exterior applications.

- Suitable for all kinds of concrete
- Horizontal and vertical applications

Large areas of exposed concrete Sika® Antisol®-200 QA is suitable for all concrete surfaces. When sprayed onto newly laid concrete surfaces it forms a thin barrier preventing premature water loss without disturbance to the normal setting action. The concrete is then allowed to cure and achieve its maximum properties.

### CHARACTERISTICS

Sika® Antisol® QA has the following characteristics:

- Single component system and easy to apply
- Reduces incidence of plastic cracking
- Forms stable film on the surface to provide excellent curing and sealing properties
- Ensures achievement of desired strengths
- Alleviates other costly methods such as Hessian-watering
- Minimizes shrinkage
- Reduces dusting
- Increases frost resistance
- Seals, primes and hardens cement-based compositions
- Considerable reduction in loss of water from concrete

### PACKAGING:

20 L pails and 210 L drums  
Milky white liquid

## Sika® Antisol® -250 WP



### USE

Sika® Antisol®-250 WP is mainly used for structural concrete surfaces.

Sika® Antisol®-250 WP curing compound is sprayed onto newly laid concrete surfaces to form a thin film barrier against premature water loss. Without disturbance to the normal setting action, the concrete is then allowed to cure and achieve maximum physical properties. Sika® Antisol®-250 WP is particularly useful in large areas of exposed concrete, such as:

- Roof decks
- Retaining walls
- Pre-stressed beams and piers
- Irrigation canals / channels
- Highways

### CHARACTERISTICS

Sika® Antisol®-250 WP provides the following properties:

- Reduces incidence of plastic cracking
- Reduces heat build-up from sun due to reflective pigments.
- Ensures achievement of desired strengths
- Minimizes shrinkage
- Reduces dusting
- Eliminates need for other costly methods of curing.

### PACKAGING:

200 lt. drums and 1000 lt. flow bins

## Lanko K11 CWA



### USE

- Foundations
- Sewage Treatment plants
- Tunnels and subway systems
- Underground structures
- Dams
- Pre-cast structures
- Swimming pools and reservoirs

### CHARACTERISTICS

- Long lasting integral waterproofing system
- Self-healing, crack sealing characteristics
- Resists extreme hydrostatic pressure
- Protects concrete from harsh conditions
- Cost effective and process friendly system
- Non-toxic and resistant to waterborne chemicals
- No detrimental effect to the performance of the concrete when recommended conditions are met.

### PACKAGING:

20 kg bag



## SikaIntraplast® -Z



### USE

Rintraplast®-Z causes the cement mixture to expand before setting. The swelling is caused by extremely regular formation of densely distributed tiny gas bubbles consisting of inert hydrogen. Product is used generally following applications

- Prestressed cable ducts
- Rock and soil anchoring
- Bearing plates
- Pre-placed aggregates
- Tunnel linings

### CHARACTERISTICS

- Increased frost resistance
- Improved fluidity
- Increased cohesion
- Volume expansion in the fresh state
- Decreased amount of water in the mix

**PACKAGING:**  
5kg Pails

## SikaFibre® 12-34



### USE

SikaFiber®-12 -34 is used to prevent concrete spalling (breaking off of layers or pieces of concrete from the surface of a structural element when exposed to the high and rapidly increasing temperatures experienced in fires), mainly in underground structures. In the event of a fire, as the temperature of the concrete increases, the moisture in the concrete becomes steam. If this steam is unable to escape an increase in pressure inside the concrete builds up to the point where it exceeds the tensile capacity of the concrete causing pieces of concrete to be violently and explosively dis-lodged. The addition of suitable polypropylene fibres in cast concrete has been accepted to counteract explosive spalling. The fibres melt inside the concrete creating the necessary voids for the steam to escape thereby preventing spalling and so maintaining the integrity of the structural element.

- Concrete, mainly when HPC and low permeability concrete is specified because of the greater pore pressures that build up during heating
- Precast concrete tunnel segments
- Concrete submitted to very high temperatures

### CHARACTERISTICS

- Helps maintain the integrity of the whole structure in the event of fire
- Reduces future repair costs
- Provides passive fire protection to both shotcrete and cast concrete and an extremely cost-effective solution when compared to alternatives such as sprayed coatings or barrier methods
- Beyond enhancing spalling resistance, addition of polypropylene fibres to wet shotcrete improves the ability to apply greater thicknesses in a single pass, reduces rebound, enhances early age crack control, reduces line pressure in spray pumps and may reduce the dosage of set accelerator

**PACKAGING:**  
1 kg water soluble bag  
supplied in boxes of  
20 bags  
White fibre

## SikaFibre® Force PP-65



### USE

- Shotcrete for tunnels and mines
- Shotcrete for pool construction and slope stabilization
- Replace steel fibers
- Replace welded wire and steel mesh

### CHARACTERISTICS

- SikaFiber® Force PP-65 provides the following properties:
- Provides three-dimensional reinforcement against micro and macro cracking
- Reduces equipment wear, concrete rebound and increases build-up thickness compared to steel fibers
- Increases overall durability, fatigue resistance and flexural toughness
- Reduction of in-place cost versus wire mesh for temperature / shrinkage crack control
- Easily added to concrete mixture at any time prior to placement
- Improved load capacity and ductility
- Rust and alkali proof, and non-magnetic
- Environmentally friendly recycled packaging
- Lower balling effect in difficult mixes

**PACKAGING:**  
5 kg boxes  
Natural / white fiber

# FLOORING SOLUTIONS





## Sikafloor®-161 QA



### USE

Sikafloor®-161 QA may only be used by experienced professionals.

For priming concrete substrates, cement screeds and epoxy mortars.

- For medium absorbent substrates
- Primer for the Sikafloor® epoxy and PU carpark systems

### CHARACTERISTICS

- Medium viscosity
- Good penetration
- Excellent bond strength
- Easy application
- Short waiting times
- Good surface filling properties
- Can be broadcasted

### PACKAGING:

Part A  
15.8kg and 18.96 Kg  
Part B  
4.20kg and 5.04 Kg  
Part A + B  
20 and 24 kg ready to mix units

## Sikafloor®-161



### USE

Sikafloor®-161 may only be used by experienced professionals.

- For priming concrete substrates, cement screeds and epoxy mortars
- For low to medium absorbent substrates
- Primer for the Sikafloor-263 SL and Sikafloor-264 economic flooring systems
- Binder for levelling mortars and mortar screeds
- Intermediate layer underneath Sikafloor-263 SL and Sikafloor-264

### CHARACTERISTICS

- Low viscosity
- Good penetration
- Excellent bond strength even on water saturated concrete
- Easy application
- Short waiting times
- Multi-purpose

### PACKAGING:

Part A: 23.7Kg  
Part B: 6.3Kg  
Part A+B: 30 kg ready to mix unit  
Part A: 220 kg drums  
Part B: 177 kg, 59kg drums  
Part A+B: 1 Drum Part A (220 kg) + 1 drum  
Part B (59 kg) = 279 kg 3 Drums Part A (220 kg) + 1 Drum  
Part B (177 kg) = 837 kg

## Sikafloor® -264 SG



### USE

Sikafloor®-264 SG may only be used by experienced professionals.

Sikafloor®-264 SG can be used as a:

- Roller coat for concrete and cement screeds with normal up to medium heavy wear for example storage and assembly halls, maintenance workshops, garages and loading ramps.
- A broadcast system for multi-storey and underground car parks, maintenance hangars and for wet process areas, for example beverage and food industry

### CHARACTERISTICS

- Good chemical and mechanical resistance
- Easy application
- Economical
- Liquid proof
- Gloss finish
- Slip resistant surface possible

### PACKAGING:

Part A 4.95 kg containers  
Part B 1.05 kg containers  
Part A + B 6 kg ready to mix units  
Part A 19.8 kg containers  
Part B 4.2 kg containers  
Part A + B 24 kg ready to mix units  
Part A 20.62 kg containers  
Part B 4.38 kg containers  
Part A + B 25 kg ready to mix units

## Sikafloor®-359 N



### USE

Sikafloor®-359 N may only be used by experienced professionals.

- Abrasion resistant seal coat with high mechanical resistance for broadcast systems with crack-bridging properties in industrial flooring
- Particularly suitable for car park decks, ramps and warehouses etc.

### CHARACTERISTICS

- Tough-elastic
- Good mechanical and chemical resistance
- Watertight
- Good opacity
- Non-yellowing
- Matt finish
- Easy application
- Slip resistant surface possible

### PACKAGING:

Part A 25.35 kg containers  
Part B 7.15 kg containers  
Part A+B 32.5 kg ready to mix units

## Sikafloor®-3240



### USE

Sikafloor®-3240 may only be used by experienced professionals.

- Smooth wearing course with crack-bridging properties for industrial floors in production and storage facilities, workshops etc.
- Broadcast wearing course with crack-bridging properties for wet working areas (food and beverage industry etc.), car park decks and loading ramps etc.
- Applicable on asphalt surfaces, indoor, as in shopping centres, exhibition and storage areas.

### CHARACTERISTICS

- Flexible and tough-elastic
- Crack-bridging
- Application on asphalt substrates possible (mastic asphalt)
- Good chemical and mechanical resistance
- Solvent-free and low VOC emissions
- Possible slip resistant surface
- Easy to apply and to keep clean
- Economical
- Not sensitive to moisture

### PACKAGING:

Part A 20.25 kg containers Coloured, liquid  
Part B 4.75 kg containers  
Transparent, liquid  
Part A + B 25.0 kg ready to mix units

## Sikagard®-62



### USE

Sikagard®-62 may only be used by experienced professionals

- Chemical resistant protective layer on concrete, stone, cementitious mortars and renderings, epoxy cement, epoxy resin based products and steel
- Lining in storage tanks and silos
- Anti-corrosion coating on steel in food processing plants, sewage works, farms, agricultural enterprises, chemical and pharmaceutical facilities and beverage industry.

### CHARACTERISTICS

- Solvent free
- Good mechanical and chemical resistance
- High build
- Impervious to liquids
- Easy to mix and to apply

#### PACKAGING:

Part A 7.50 kg can  
Part B 2.50 kg can

## Sikadur® Aggregates QA



### USE

Sikadur® Aggregate QA is used in conjunction with Sikafloor® - 161 as a non-slip, abrasion-resistant epoxy resin flooring screed of 5-20 mm thickness in applications such as:

- Flooring subject to moderate or heavy loading
- Workshop and factory floors
- Machine shops and warehouses
- Depots and loading ramps
- Hangars
- Stairs
- Sikadur® Aggregate QA is used as Broad-casting layer to reach the roughness surface for anti-slip traffic coating

### CHARACTERISTICS

- Pre-bagged with selected grading
- Ready to mix
- Clean and dry for optimal performance

#### PACKAGING:

25 kg Bag

## Sikafloor®-20 PurCem®



### USE

Sikafloor®-20 PurCem® may only be used by experienced professionals. Sikafloor®-20 PurCem® is used as a final flooring wear layer in Sikafloor® PurCem® HM-20 system build up in areas of high mechanical abrasion and impacts, aggressive chemical attack, thermal shocks and high temperature stresses.

### CHARACTERISTICS

- Very good chemical resistance
- Excellent mechanical resistance
- High glass transition point
- Good chemical resistance
- Non tainting / odourless
- VOC free and environmental friendly
- Can be applied to substrates with high moisture content (7 days old or mature damp concrete)

#### PACKAGING:

Part A (pre-tinted) 3.00 kg plastic pail  
Part A (neutral) 2.5 kg plastic pail  
Part B 3.00 kg plastic jerrycan  
Part C 26.50 kg plastic lined, Double paper bags  
Part D 0.38kg plastic pouch for substrate A neutral

## Sikafloor®-21 N PurCem® (CN)



### USE

- Sikafloor®-21N PurCem(CN) floors are primarily used to protect concrete substrates, but are equally effective over most steel surfaces that have been properly prepared and supported.
- Typically used in food processing plants, wet & dry process areas, freezers & coolers, dairies, breweries, wineries, distilleries, laboratories, chemical process plants, pulp and paper plants, warehouses and storage areas.

### CHARACTERISTICS

- Resists a very wide range of organic and inorganic acids, alkalis, amines, salts and solvents. Consult Sika Technical Services Department for full details. Refer to the Sikafloor®PurCem(CN) Chemical Resistance Chart.
- Similar coefficient of thermal expansion to concrete allowing movement with the substrate through normal thermal cycling. It will perform and retain its physical characteristics through a wide temperature range from -40oC up to + 115oC.
- Bond strength in excess of the tensile strength of concrete, concrete will fail first.
- Non-taint, odourless.
- Behaves plastically under impact / deforms but will not crack or debond.
- High abrasion qualities result from its pure silica aggregate structure.
- Extra Expansion joints are not necessary; simply maintain and extend existing expansion joints up through the Sikafloor® PurCem(CN) Flooring System.
- Easily maintained.

#### PACKAGING:

33.4 kg/set  
Part A : 5 kg/pail  
Part B : 5 kg/pail  
Part C : 21.8 kg/bag  
Part D : 1.6 kg/pack



## Lanko Floor Screed



### USE

Ensure the substrate is damp and clean. Compact and finish Lanko Floor Screed in accordance with standard practice by using wooden float or steel trowel where appropriate. It is important to protect the product during placement and whilst curing from direct sunlight and winds. This is to prevent rapid dehydration or desiccation (excessive moisture loss).

### CHARACTERISTICS

- Premixed (only add water)
- Easy to use
- High Durability
- Application from 10 to 50 mm

**PACKAGING:**  
25 kg bag

## Lanko 123



### USE

Suitable for balconies, terraces, individual or collective garages, etc. Permissible substrata

- Mortar screed
  - Concrete slabs
  - Prefabricated elements
- Possible covering materials
- Carpet
  - Parquet
  - Vinyl sheeting
  - Floor paints
  - Ceramic tiles
  - Rubber

### CHARACTERISTICS

- Excellent adherence
- Can be left bare

**PACKAGING:**  
25 kg bag

## Lanko 162



### USE

- Apply a regular coat of the product by brush or roller.
- Drying time: 2-4 hours depending on substrate, temperature and relative humidity.
- 162 FLOW PRIME can be covered as soon as it is touch-dry.
- The primer must be covered within 24 hours.

### CHARACTERISTICS

- Creates a bonding key.
- Improves the bonding strength.
- Reduces the bubble effect.
- Easy to use.

**PACKAGING:**  
20 L container

## Lanko 173



### USE

Used for leveling of old concrete and screed covered floors in indoors and dry areas, before PVC coating of internal areas that are exposed to pedestrian traffic in shopping malls, hotels, shops, hospitals, schools, etc., before decorative floor covering with hardwood, vinyl, carpet, etc., before materials such as ceramics, tiles, granite, marble, etc. are affixed.

### CHARACTERISTICS

- Quick and easy application High liquidity
- Self-expanding and leveling
- Does not crack
- Has high abrasion resistance
- Can be applied to 3 to 10 mm thickness

**PACKAGING:**  
25 kg craft bags  
grey

## LANKO 243



### USE

- Suitable for areas with high traffic such as warehouses, parking lots, power plants, etc.
- Resistant to abrasion and reduced corrosion caused by use
- Smooth, firm, homogeneous skin
- The structural floor is easy to clean.
- No metal powder, no rust.
- Protects the surface from oil stains

### CHARACTERISTICS

- Parking lot
- Warehouse
- General Industrial Area
- Steel Mills power plant
- Mall
- Unloading Dock

**PACKAGING:**  
5 kg bag

## Sikagard® WallCoat N QA



### USE

- Sikagard® Wallcoat N QA may only be used by experienced Professionals.
- Application on concrete and cementitious substrates
- Coloured seal coat for interior wall surfaces
- Suitable for clean rooms
- Suitable for production facilities in the food and beverage industry

### CHARACTERISTICS

- Solvent free
- Good mechanical and chemical resistance
- High build
- Impervious to liquids
- Easy to clean
- High resistance to carbonation
- Excellent decontamination properties
- Good opacity
- Odourless
- Easy to mix and to apply

### PACKAGING:

Part A: 14.6 kg containers  
Part B: 5.4 kg containers  
Part A+B: 20 kg ready to mix units

## SikaDecor®-801 Nature



### USE

- Decorative continuous coatings in interiors walls
- Coating for furniture, shelves, etc.
- Coatings of old ceramics tiles
- Interior rooms like kitchen and bathrooms.
- Decorative coating for shops, residential buildings, institutional buildings, etc.

### CHARACTERISTICS

- Predosed
- Good UV resistance
- Excellent workability
- High adhesion to substrate
- Fast application
- Highly decorative and aesthetic, results in a unique surface
- Transpirable

### PACKAGING:

Part A: 3.0 kg  
Part B: 10.0 kg  
Part A + B: 13.0 kg predosed units  
SikaDecor® Color Pigment: 500 ml

## SikaDecor®-803 Nature



### USE

- SikaDecor®-803 Nature is suitable for:
- Surface regularization and reprofiling before microcement decorative coatings.
  - Filling of ceramic tiles for levelling before microcement decorative coatings.

### CHARACTERISTICS

- Predosed
- Easy to apply
- Low shrinkage

### PACKAGING:

30.0 kg predosed units

## Sikafloor®-304 W



### USE

Sikafloor®-304 W may only be used by experienced professionals. Matt seal coat for Sika ComfortFloor® flooring range.

### CHARACTERISTICS

- Water based
- Very low odour
- Good UV and yellowing resistance
- Easy to clean

### PACKAGING:

Part A 6.0 kg containers  
Part B 1.5 kg containers  
Part A+B 7.5 kg ready to mix units

## Sikafloor®-330



### USE

Sikafloor®-330 may only be used by experienced professionals.

Elastic smooth wearing course for the Sika Comfort- Floor® and Sika ComfortFloor® Pro Systems.

Particularly suitable for hospitals, schools, sales premises, showrooms, entrance halls, lobbies, open plan offices, museums and residential use  
For interior use only.

### CHARACTERISTICS

- Very low VOC emission
- Solvent free
- Permanently elastic (crack bridging)
- Good mechanical resistance
- Reduces contact sound
- Easy to apply
- Low maintenance finish

### PACKAGING:

Part A 15.0 kg containers  
Part B 5.0 kg containers  
Part A+B 20.0 kg ready to mix units

## Sikafloor®-305 W ESD



### USE

Sikafloor®-305 W ESD may only be used by experienced professionals.

Sikafloor®-305 W ESD is used as matt coloured ESD seal coat for Sikafloor® epoxy and PUR flooring systems.

### CHARACTERISTICS

- Very low VOC emissions
- Water based
- Easy to apply
- Easy to refurbish, can be over coated directly with itself
- Very low odour
- Good UV resistance, non-yellowing
- Easy to clean
- In accordance with general ESD requirements
- Matt surface
- Suitable as floor covering acc. DIN VDE 0100-410 / T610 as top coat of non-conductive Sikafloor products

### PACKAGING:

Part A 8.5 kg containers  
Part B 1.5 kg containers  
Part A+B 10.0 kg ready to mix units

## Sikafloor®-305 W



### USE

Sikafloor®-305 W may only be used by experienced professionals.

Matt seal coat for Sika ComfortFloor® flooring range, for smooth Sikafloor® polyurethanes and for the Sikafloor® Economy line epoxies.

### CHARACTERISTICS

- Water based
- Very low odour
- Good UV resistance, non-yellowing
- Easy to clean

### PACKAGING:

Part A 8.5 kg containers  
Part B 1.5 kg containers  
Part A + B 10. kg ready to mix units

## Sika® DecoQuartz



### USE

- Industrial (e.g. Manufacturing)
- Transportation (e.g. Airports)
- Retail (e.g. Shopping Malls)

### CHARACTERISTICS

- Decorative / functional
- Low VOC-content
- Very good UV resistance
- Good mechanical and abrasion resistance
- Slip resistant
- Easy application

### PACKAGING:

## Sikafloor®-169



### USE

Sikafloor®-169 may only be used by experienced professionals. Sikafloor®-169 is used as:

Transparent binder for colored quartz mortars & screeds like Sikafloor® Decodur ES-22 Granite, Sikafloor® Decodur ES-26 Flake, Sikafloor® Decodur EB-26 Quartz and Sikafloor® Decodur EM-21 Compact

Transparent sealer coat for broadcast colour quartz mortar screeds and smooth coatings fully broadcast to excess with coloured chips

Suitable for normal up to medium heavy & heavy mechanical loading

Particularly used in the food and pharmaceutical industries, for show rooms, workshops and production areas etc.

### CHARACTERISTICS

- Transparent
- Low VOC-content
- Low yellowing
- Good mechanical and abrasion resistance
- Low viscous
- Easy application
- Multi-purpose binder

### PACKAGING:

Part A: 7.5 kg containers  
Part B: 2.5 kg containers  
Part A+B: 10 kg unipacks  
Bulk packaging  
Part A: 190 kg drums  
Part B: 190 kg drums

## Sikafloor® Comort Regupol-4580



### USE

- Particularly suitable for hospitals, schools, sales premises, showrooms, entrance halls, lobbies, open plan offices, museums or residential use. For interior use only.

### CHARACTERISTICS

- Permanently flexible
- Shock and sound absorption

### PACKAGING:

Roll diameter = 55 cm

## Sikafloor® Comfort Porefiller



### USE

Sikafloor® Comfort Porefiller may only be used by experienced professionals.

- Is a durable high-quality compound used for sealing and levelling of the permeable surface of prefabricated granular rubber sheets
- Particularly suitable for hospitals, schools, sales premises, showrooms, entrance halls, lobbies, open plan offices, museums
- For interior use only

### CHARACTERISTICS

- Good bonding properties
- Low VOC
- Non flammable
- No shrinking after curing
- Easy to apply

### PACKAGING:

Part A: 16 kg containers  
Part B: 4 kg containers  
Part A+B: 20.0 kg ready to mix units

## Sikafloor® Comfort Adhesive



### USE

Sikafloor® Comfort Adhesive may only be used by experienced professionals.

- Durable high-quality adhesive used to permanently adhere prefabricated granular rubber on concrete and cementitious screeds.
- Particularly suitable for hospitals, schools, sales premises, showrooms, entrance halls, lobbies, open plan offices, museums or residential use. For interior use only.

### CHARACTERISTICS

- Good bonding properties
- Low VOC
- Non flammable
- No shrinking after curing
- Easy to apply

### PACKAGING:

Part A: 17 kg containers  
Part B: 3 kg containers  
Part A+B: 20.0 kg ready to mix units

## Sikafloor® Comort Regupol-6015 H



### USE

- Particularly suitable for hospitals, schools, sales premises, showrooms, entrance halls, lobbies, open plan offices, museums or residential use. For interior use only

### CHARACTERISTICS

- Permanently flexible
- Shock and sound absorption
- High hardness & High impact resistance
- Durable high-quality rubber shock pad
- Easy to apply

### PACKAGING:

Packaging unit 1 roll  
67.5 m<sup>2</sup>  
Roll width 1.5 m  
Roll length 45 m  
Roll weight 187 kg/roll  
Roll diameter ~0.5m

## Sikafloor® Conductive Set



### USE

Sikafloor® Conductive Set is used to ground decorative and protective electrostatic conductive floor coverings used in automotive, electronics and pharmaceutical manufacturing, storage facilities and warehouses.

### CHARACTERISTICS

- Good durability in terms of mechanical resistance
- Cost effective
- Easy to apply
- Stable connection

### PACKAGING:

1 plastic box with all required single parts for 10 earthing points

## Sikafloor® MultiDur ES-44 ESD



### USE

Sikafloor® MultiDur ES-44 ESD may only be used by experienced professionals. It is used as:

- Dissipative coloured indoor system for electrostatic protected areas (EPA).
- Particularly suitable for areas with requirements for the lowest electrostatic charge (low BVG – Body Voltage Generation) and dissipative surface
- Typical applications include clean rooms in the electronics industry, microbiology/microchemistry sectors, production plants in the automobile industry etc.

### CHARACTERISTICS

- Very low VOC emissions
- Water based
- Easy to apply
- Easy to refurbish, can be overcoated directly with itself
- Low odour
- Good UV resistance, good resistance to yellowing
- Easy to clean
- Conforms to the requirements of ANSI/ESD S20.20 and IEC61340-5-1
- Matt surface
- Suitable as floor covering acc. DIN VDE 0100-410 / T610 as top coat of non-conductive Sikafloor products.

## Sikafloor® PS



### USE

Sikafloor® PS can be used in following situations:

- Concrete minor repairs such as honeycombing, blow holes, pin holes, etc.
- General smoothing / re-profiling over large areas
- Suitable for feather edge
- Filling pinholes prior to over coating with Sikafloor®, Sikadur® and Sikagard® product range
- Filling cracks and surface sealing

### CHARACTERISTICS

Sikafloor® PS is an extremely versatile product that offers many advantages to user:

- Easy to apply
- Suitable for dry and damp surfaces
- Cost effective; consumption of subsequent coatings is reduced
- Non-shrink
- Excellent mechanical strengths
- Excellent adhesion to concrete substrates
- High abrasion and impact resistance
- High chemical resistance
- Solvent free

### PACKAGING:

Part A:  
4 kg and 16 kg container  
Part B:  
2 kg and 8 kg container  
(A + B) 6 kg and 24 kg  
ready to mix units  
Color:  
Grey (Mixed A + B)  
Component A: White  
Component B: Black

## Sika® PU Quartz



### USE

- Suitable for use in tropical and hot climates.

### PACKAGING:

25 kg bag and 1500 kg big bags

## Sikafloor® DecoDur EM-21 Compact



### USE

Sikafloor® DecoDur EM-21 Compact may only be used by experienced professionals.

- Industrial (e.g. Manufacturing)
- Transportation (e.g. Airports)
- Retail (e.g. Shopping Malls)

### CHARACTERISTICS

- Very good mechanical and abrasion resistance
- Decorative
- Low VOC-content

## Sikafloor®-2530 W LP



### USE

- Coloured sealer coat for concrete and cementitious substrate
- Can be subjected to normal up to medium heavy mechanical and chemical loading
- For production areas, warehouses, car park decks, garages, food processing area, laboratories, storage areas, breweries, tunnel walls, decontaminable areas, pharmaceutical, etc.

### CHARACTERISTICS

- Good chemical and mechanical resistance
- Water vapour permeable
- Solvent free
- Water dilutable
- Odourless
- Easy application

### PACKAGING:

Part A+B: 10 kg set and 18 kg set ready to mix units  
Color:  
Resin – part A: Coloured, Liquid  
Hardener – part B: Transparent. Liquid

## SikaTop®-10



### USE

- Particularly suitable for use as a primer for SikaDecor®-803 Nature
- For use in mineral substrates, cement coatings and on old ceramic tiles

### CHARACTERISTICS

- Excellent adhesion to porous and vitreous substrates
- Prevents water loss in the substrate
- Economic
- Increases durability
- Alkaline-resistant pH
- Ready to use
- Easy to use
- For substrates with high moisture content

### PACKAGING:

Plastic container 5 & 20kg  
Color:  
Liquid reddish with fillers



## Sikafloor®-154 W



### USE

- Primer for Sikafloor®-2100

### CHARACTERISTICS

- Excellent adhesion on cement supports
- Quick and easy to apply
- Short waiting times
- Little smell
- Can be diluted for different types of substrate absorbency
- Improves long-term adhesion of the next coating

### PACKAGING:

Part A packs of 20 kg  
Part B packs of 5 kg  
Part A+B 25 kg ready to use  
Color:  
Semi-glossy finish  
Resin-Part A Colored liquid  
Hardener Part B Light yellow liquid  
Mixed resin Grey (~ RAL 7015)

## Sikafloor®-2100



### USE

- Multi-purpose sports flooring surface
- Coating for bicycle and pedestrian lanes in parks and recreational areas
- Coating for pedestrian areas, sidewalks, house accesses, etc.

### CHARACTERISTICS

- Easy application
- Good aesthetic finish
- Resistant to light wheeled traffic
- Good flexibility
- Available in many colours
- Resistant to occasional hydrocarbon spillages
- Suitable for asphalt substrates
- Can be filled with quartz sand to varying thickness's and cost savings

### PACKAGING:

Part A 9.5 kg containers  
Part B 0.5 kg plastic bag  
Part A+B 10 kg ready to mix units  
Color:  
Smooth Semi-glossy finish  
Resin-Part A Colored liquid  
Hardener Part B White liquid  
\*Multiple color is available

## Sikadur®-504



### USE

Suitable for Sikafloor® products:

- Sikafloor®- 161 (Scratch coat)
- Sikafloor®- 263
- Sikafloor®- 325
- Sikafloor®- 326
- Sikafloor®- 300
- Sikafloor®- 330
- Sikafloor®- 262(AS)
- Sikafloor®- 381(AS)

### CHARACTERISTICS

- Grading: 0.08 - 0.2 mm
- Bulk Density: 1.5 Kg/Lt

### PACKAGING:

25 kg bag

## Sikafloor® CureHard-24



### USE

- Horizontal, old or new concrete surfaces on which a hard surface with light to medium abrasion resistance is required, e.B. warehouses, industrial facilities, shops, shopping centers, petrol stations, hangars, etc.
- On concrete slabs when no degree of hardness is required
- Indoor and outdoor use
- Dust protection of precast concrete parts to protect against the ingress of substances

### CHARACTERISTICS

- Ready-made
- Easy application
- Improved chemical and mechanical resistance
- Dust-binding
- Reduced water loss in case of concrete binding
- Improved cleaning capability
- No yellowing
- High penetration depth
- Solvent-free
- Colorless and odourless
- Environmentally friendly

### PACKAGING:

25 Kg containers,  
180 kg barrels  
Color:  
clear, colorless liquid

## Sikafloor®-1 MetalTop



### USE

- Sikafloor®-1 MetalTop provides a non-staining, ultra-hard wearing, metallic dry shake topping for monolithic floors. When sprinkled and troweled into fresh wet concrete floors, it forms a colored, extremely wear resistant smooth and dense surface
- Typical uses are in warehouses, heavy duty, prestige and high durability requirement distribution centers, factories, manufacturing facilities, transport terminals, power stations, etc.

### CHARACTERISTICS

- Highest wear resistance rating
- Excellent impact resistance
- Non staining, non-corroding
- Cost effective, long life floor
- Maintenance free. Regular cleaning is simply all that is required.
- Lip resistant surface possible
- Dust proof
- Available in a range of colours

### PACKAGING:

25 Kg Bags  
Color:  
Powder Natural (concrete grey) and Other colors upon request

## Sika® Extender T



### USE

- Additive: Sikafloor® epoxy, polyurethane and acrylic resins
- Used for horizontal surfaces to create a special surface pattern
- Improves the ability of the coating to remain in place on vertical surfaces during drying
- Filling cracks and pores with vertical and horizontal surfaces.

### CHARACTERISTICS

- Modification of viscosity in ® products
- Economical, easy to mix and use
- Does not affect the time or hardening of the container
- Small need for material to change viscosity
- Does not contain carcinologists
- Additive not reactive

### PACKAGING:

22 Pound (10 kg) Bag  
Color:  
White Powder

## Sikafloor®-2040



### USE

- Durable coating for sports flooring
- Durable cladding for bike lanes
- Residential garage floors
- Primer for Sikafloor®-2100

### CHARACTERISTICS

- Easy application
- Good abrasion resistance
- Available in different colors
- Suitable for asphalt supports

### PACKAGING:

Packs of 20 kg  
Color:  
Smooth semi-gloss finish Available colors: red (~RAL 3009), green (~RAL 6001), grey (~RAL 7015).  
The applied colors selected from the color folders will be approximate

## Sikafloor®-381



### USE

Coating for industrial floors subject to high chemical and mechanical loads, such as plants in the chemical and pharmaceutical industries or in the laboratory sector.

### CHARACTERISTICS

- Chemically highly resistant
- Mechanically high-stress able
- Abrasion-resistant
- Fast curing

### PACKAGING:

Component A -21.25 kg  
Component B -3.75 kg  
Mixture A+B -25 kg  
Color:  
Resin - Comp. A: cColored, liquid  
Hardener - Comp. B: transparent, liquid

## SikaCor® EG-5



### USE

In combination with 2-pack primer and intermediate coats of the SikaCor® and Sika® Permacor® product range for heavy duty corrosion protection of atmospheric exposed and submerged steel structures. SikaCor® EG-5 can also be used as a line marking paint on self levelling and broadcasted epoxy and polyurethane resin-based floors e. g. for car parks.

### CHARACTERISTICS

- Very good corrosion protection properties
- Tough elastic and hard but not brittle
- Largely insensitive against shock and impact
- Excellent chemical, weather and colour stability

### PACKAGING:

SikaCor® EG-5 30 kg and 10 kg net.  
Sika® Thinner EG 25, 10 and 3  
SikaCor® Cleaner 160 and 25  
Color:  
RAL and NCS colour shades

## SikaCor® Zinc R



### USE

Robust corrosion protection primer for steel offering a wide range of applications. Mainly for bridges, pipelines, containers, industrial and harbor installations, sewage treatment plants and large machinery; submerged or non-submerged in industrial or marine environments. Particularly suited for workshop application as heavy-duty transportable coating. In a dry film thickness of 20 µm SikaCor® Zinc R can also be employed as welding primer. Test report is available upon request.

### CHARACTERISTICS

- Excellent corrosion protection
- Mechanically extraordinary resistant
- Extremely high water and condensation water resistance
- Fast drying and curing characteristics

### PACKAGING:

SikaCor® Zinc R 26 kg, 15kg and 7 kg net.  
Sika® Thinner K 25, 10 and 3  
SikaCor® Cleaner 160 and 25  
Color:  
Zinc grey, mat.-no. 687.03  
Tinted red, mat.-no. 687.04

## SikaCor® EG-120



### USE

Decorative, versatile corrosion protection coating for traffic structures, pipelines, containers, industrial and port facilities, sewage treatment plants and large machines in an aggressive atmosphere, in the water, seawater and wastewater sectors. Excellent as a single-layer system for steel structures indoors. In stationary processing als transportable coating with high mechanical resistance.

### CHARACTERISTICS

- High solid volume, low solvent content
- Thick-layered workable with dry layer thicknesses of 120 microns
- Excellent adhesion to steel, hot-dip galvanizing and aluminium as a single-layer
- High weather and light resistance

### PACKAGING:

SikaCor® EC-120 (RAL) 30 kg and 10 kg net.  
SikaCor® EC-120 (EC) 15 Kg net  
Sika® Dilution EC 25, 10 and 3  
Color:  
RAL and iron glimmer shades.  
Low color deviations from the listed shades are unavoidable for raw material reasons

## Sika® Permacor®-2230 VHS



### USE

Mechanically resistant top coating for atmospherically loaded steel surfaces e.B. for bridges, pipelines, industrial and port facilities, tanks, wind turbines and sewage treatment plants. In combination with 2-K base and intermediate coatings from the SikaCor® and Sika® Permacor product range® Sika® Permacor®-2230 VHS results in a mechanically resistant coating system with high weather stability in land, urban, industrial and marine atmosphere up to C5 high according to DIN EN ISO 12944-2.

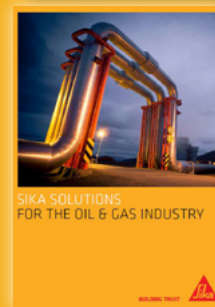
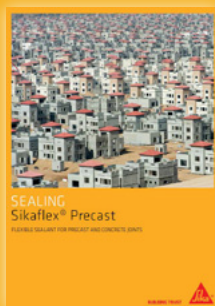
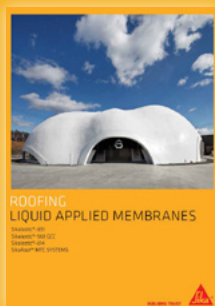
### CHARACTERISTICS

- Excellent weather stability
- Fast curing and short revision times
- Economically due to high solids content
- VOC content of approx. 250 g/l

### PACKAGING:

Sika® Permacor®-2230 VHS 25 kg and 10 kg net  
Sika® Dilution P 25 I and 5  
Color:  
RAL, NCS shades, other shades on request.

# SIKA FULL RANGE SOLUTIONS FOR CONSTRUCTION:



## FOR SIKA GCC INFORMATION:



[gcc.sika.com](http://gcc.sika.com)

### WHO WE ARE

Sika is a globally active specialty chemicals company supplying the building and construction industry, as well as manufacturing industries. Sika is a leader in processing materials used in sealing, bonding, damping, reinforcing and protecting loadbearing structures. Sika's product lines feature high quality concrete admixtures, specialty mortars, sealants and adhesives, damping and reinforcing materials, structural strengthening systems, industrial flooring as well as roofing and waterproofing systems.

Our most current General Sales Conditions shall apply.  
Please consult the Data Sheet prior to any use and processing.



Sika Qatar LLC  
P.O.Box 201847  
Doha, Qatar  
T: +974 40 163 366  
F: +974 40 163 370  
[sika.qatar@qa.sika.com](mailto:sika.qatar@qa.sika.com)

**BUILDING TRUST**

